

# U 96

---

# U-BOAT

## Pack 13

### Assembly Instructions

**Kit 49: Second magnet**

**Kit 50: Non-commissioned officers' compartment (I)**

**Kit 51: Non-commissioned officers' compartment (II)**

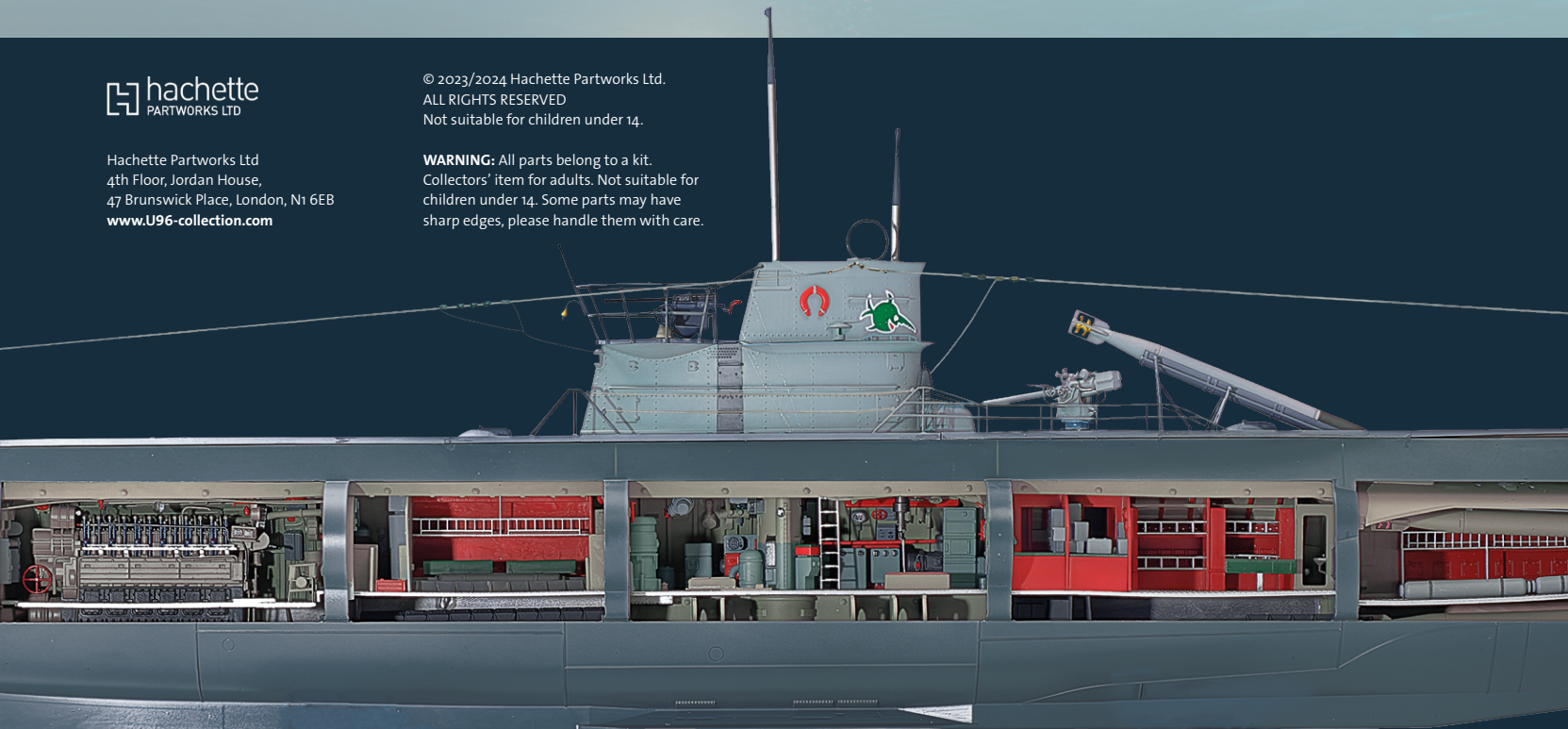
**Kit 52: Non-commissioned officers' compartment (III)**



Hachette Partworks Ltd  
4th Floor, Jordan House,  
47 Brunswick Place, London, N1 6EB  
[www.U96-collection.com](http://www.U96-collection.com)

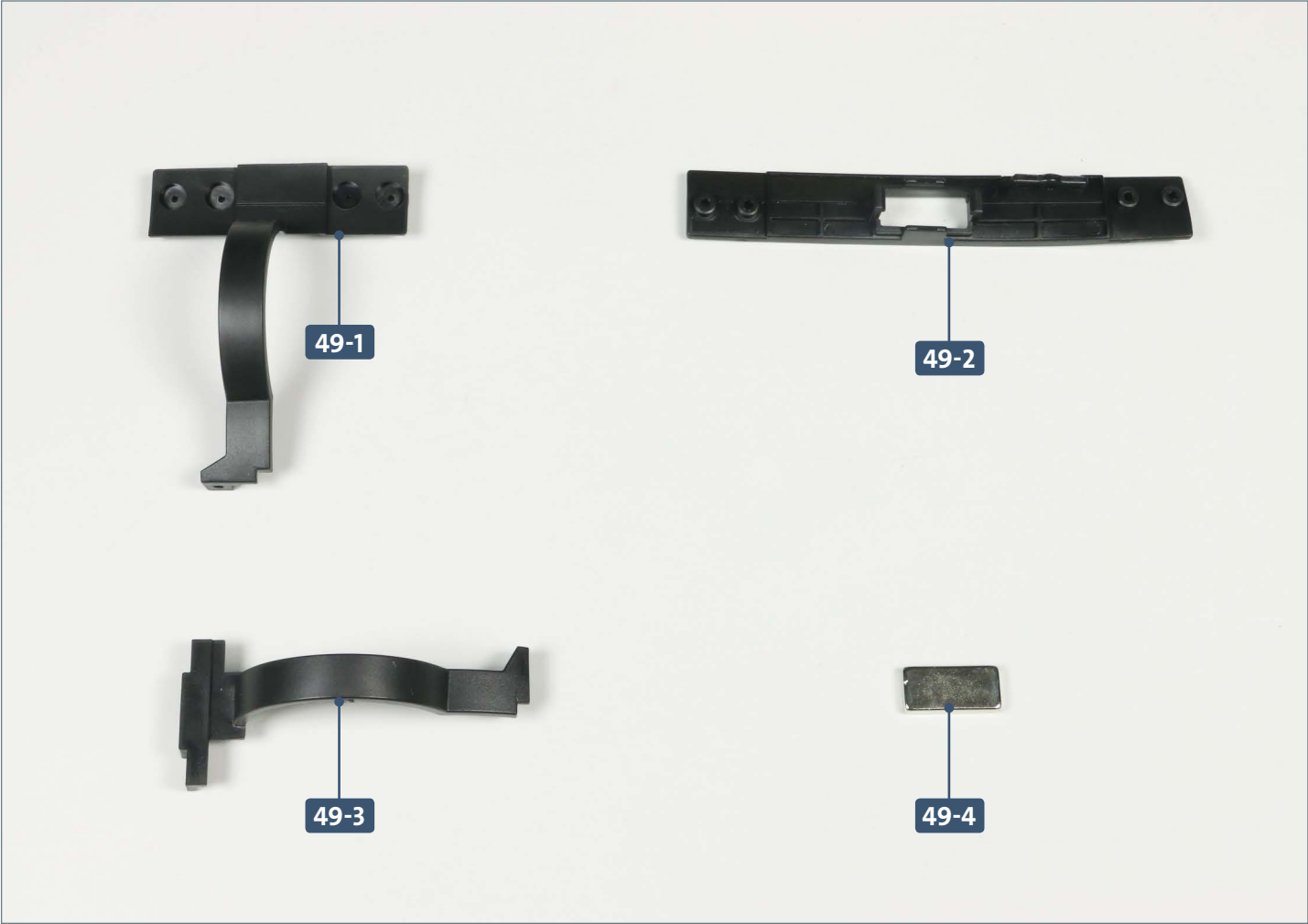
© 2023/2024 Hachette Partworks Ltd.  
ALL RIGHTS RESERVED  
Not suitable for children under 14.

**WARNING:** All parts belong to a kit.  
Collectors' item for adults. Not suitable for  
children under 14. Some parts may have  
sharp edges, please handle them with care.



# Kit 49: Second magnet

In this kit, two further connecting pieces are added to give additional stability to the previously joined second and third compartments. A second magnet is fitted to a mounting plate, which is attached to the hull.



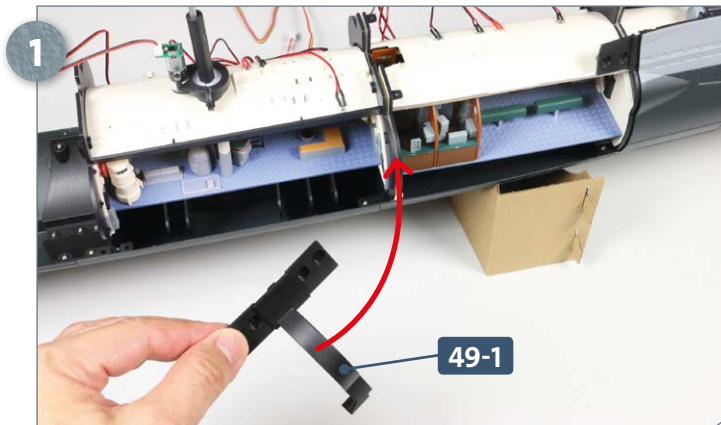
Parts reference list	
Part no.	Name
49-1	Connector
49-2	Mounting plate
49-3	Connector
49-4	Magnet



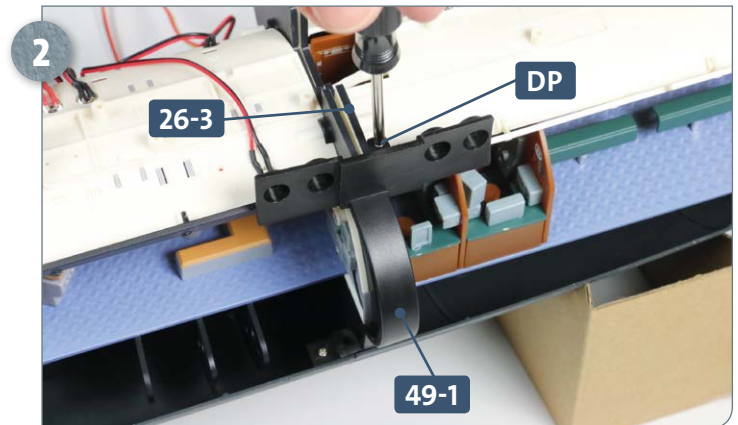
Screws		
Ref	No.	Dimensions
DP	8+1	2 x 6 mm

## Kit 49: Second magnet

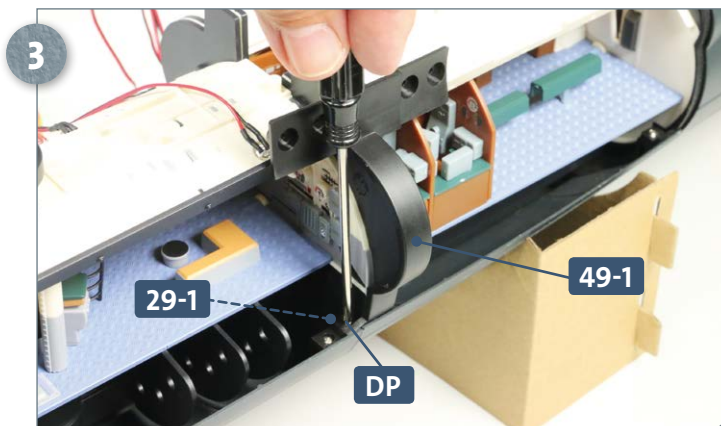
### STAGE 1 → Attaching the connectors and mounting plate



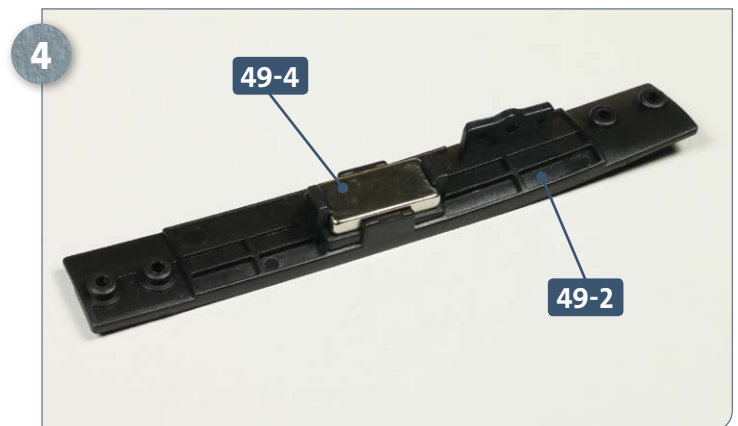
Place the main hull assembly on your worktop so that you have access to the (open) starboard (R) side. Fit the connector **49-1** over the two bulkheads between compartments **2** and **3**, as indicated by the arrow.



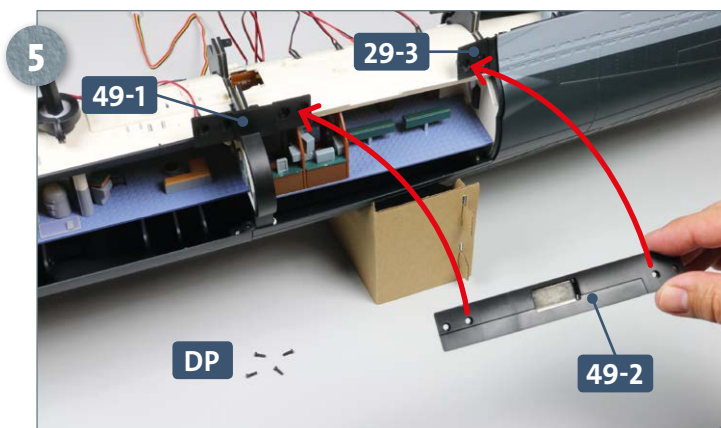
Fix the connector **49-1** to the tab on the top of the bulkhead **26-3** using a **DP** screw.



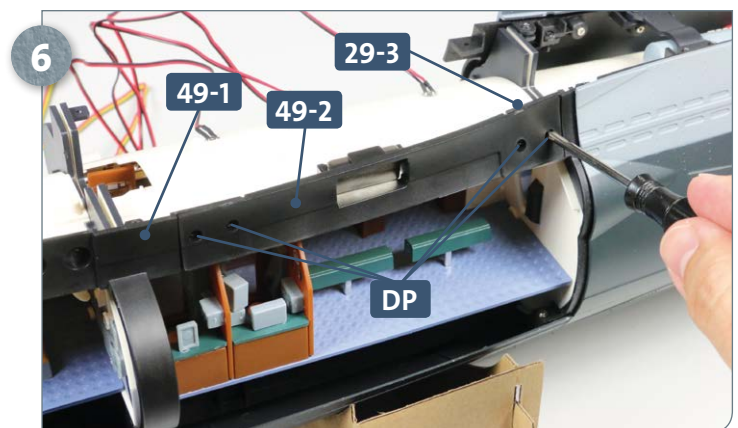
Use another **DP** screw to attach the connector **49-1** to the connector **29-1** at the bottom of the bulkhead **33-1**.



From above, fit the magnet **49-4** into the recess on the back of the mounting plate **49-2**.



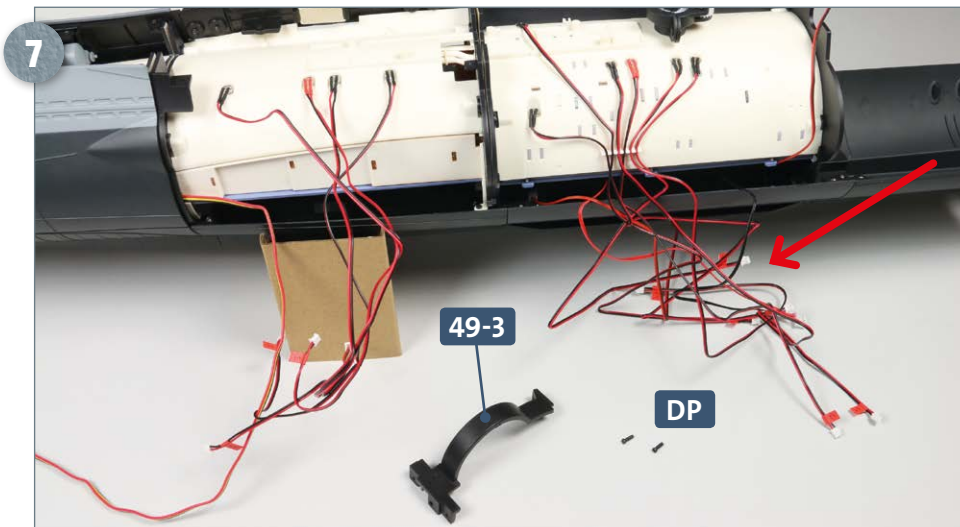
Have ready four **DP** screws. Fit the mounting plate **49-2** between the two connectors **29-3** and **49-1**.



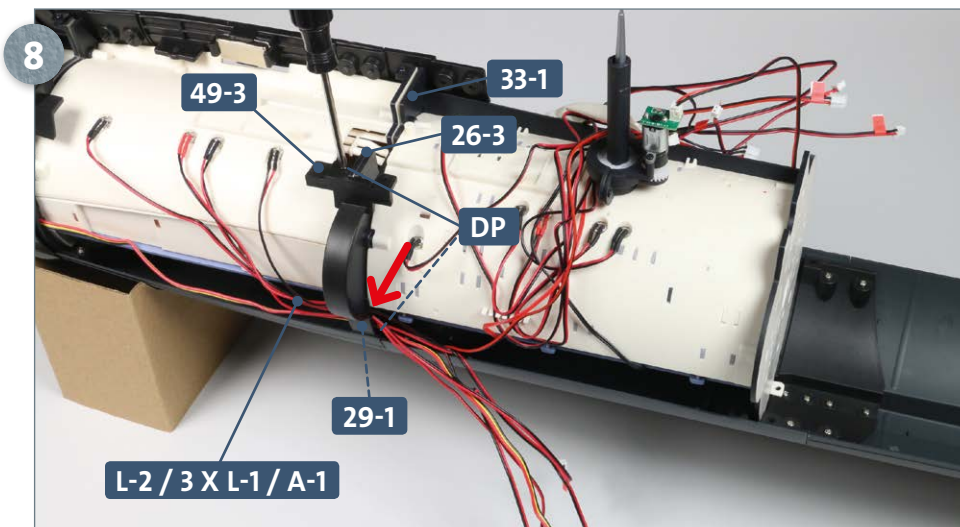
Secure the mounting plate **49-2** in place using two **DP** screws each into connectors **29-3** and **49-1**, as shown.



## Kit 49: Second magnet

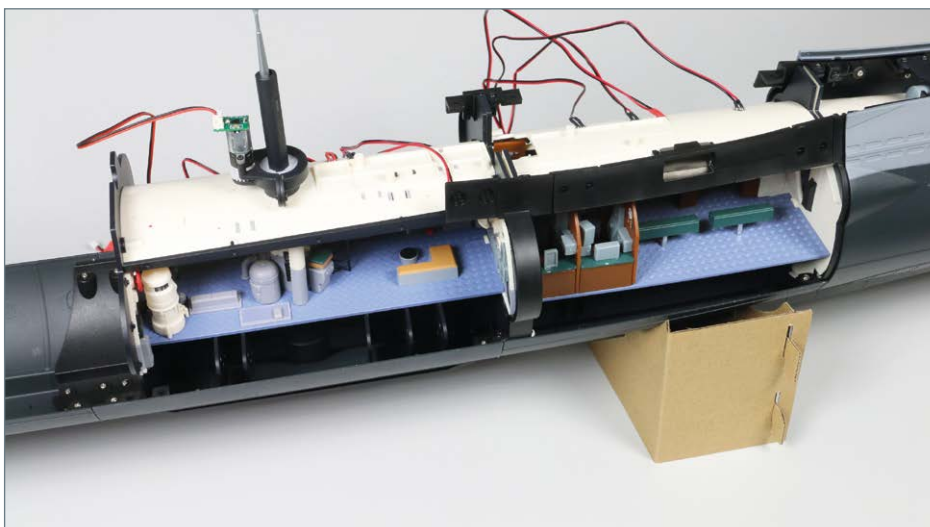


Turn the hull structure round so that you have access to the port (L) side. Have ready the second connector **49-3** and two **DP** screws. Temporarily arrange the cables (indicated by the arrow) up towards the attack periscope. See next step.



Fit the connector **49-3** over the adjacent bulkheads **26-3** and **33-1**. Route the five cables (**L-2**, **3 x L-1** and **A-1**) aft through the small recess at the bottom between the connector and the bulkheads as shown by the arrow. Fix connector **49-3** in place using a **DP** screw into the top tab of bulkhead **26-3** and another at the bottom of the connector **29-1**, as shown.

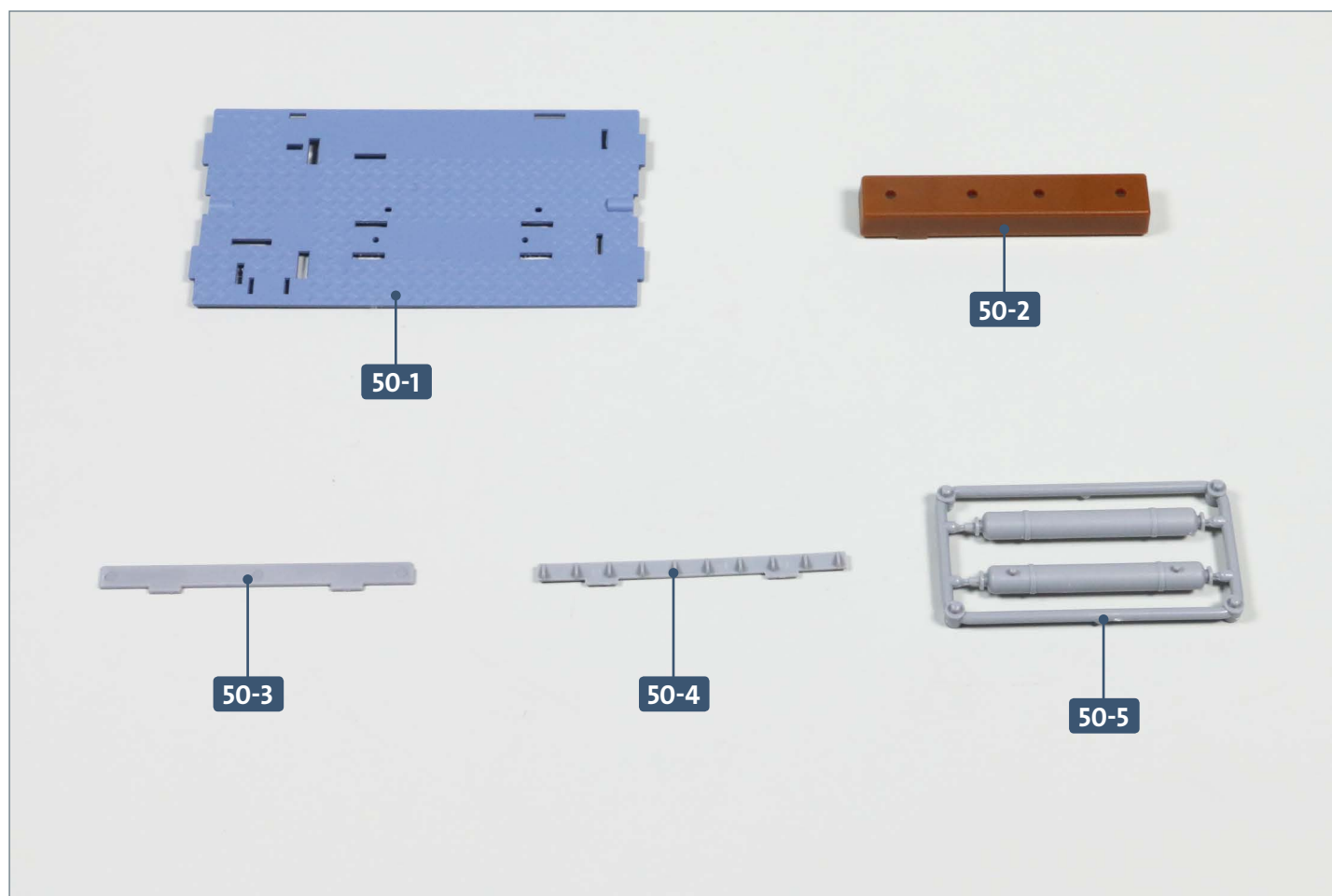
## COMPLETED WORK



**Two additional connectors and a mounting plate have been added, with the second magnet attached to the hull structure.**

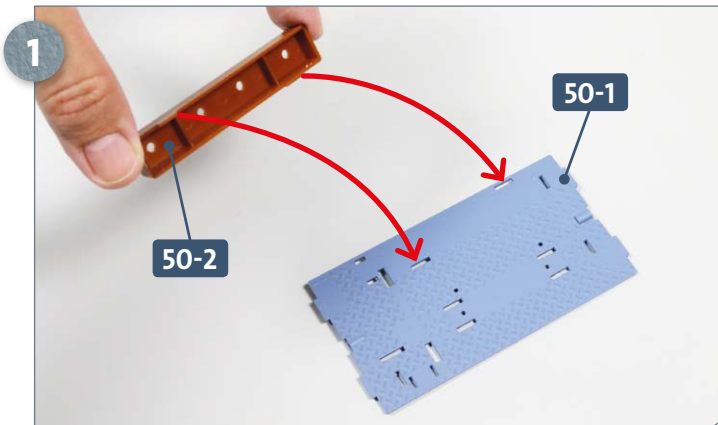
# Kit 50: Non-commissioned officers' compartment (I)

In this kit, you will start the assembly of the fourth compartment: the NCOs' room and galley. Here, the first parts are attached to the deck.

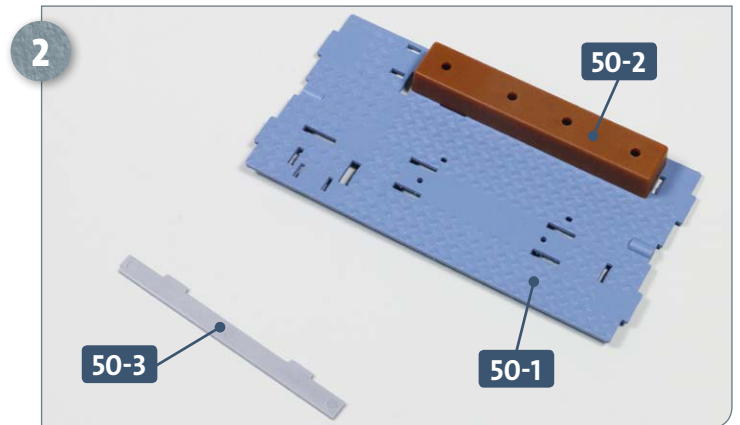


Parts reference list	
Part no.	Name
50-1	Deck
50-2	Bunk base
50-3	Support
50-4	Support
50-5	Compressed air bottle

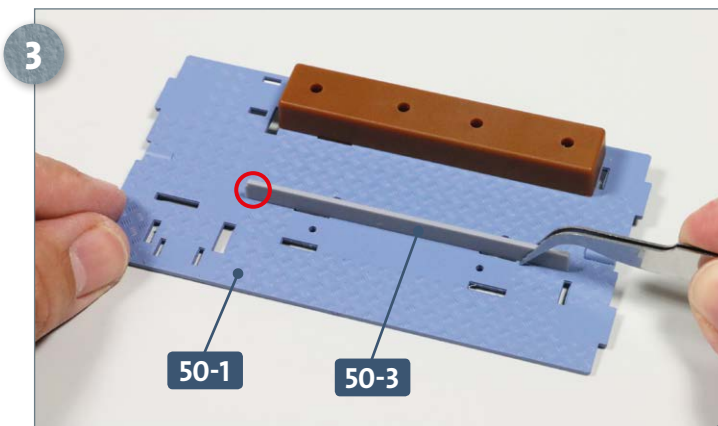
## STAGE 1 → Initial stages



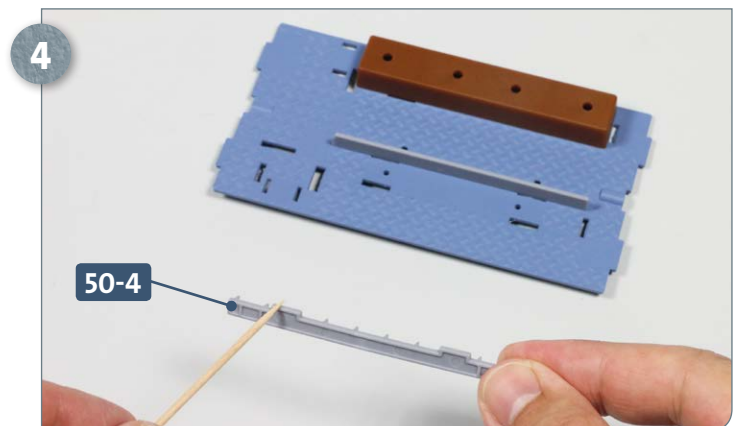
Place the deck **50-1** on your work surface, as shown. Take the bunk base **50-2**, apply some glue to the two tabs underneath, and insert these into the slots in the deck as shown by the arrows.



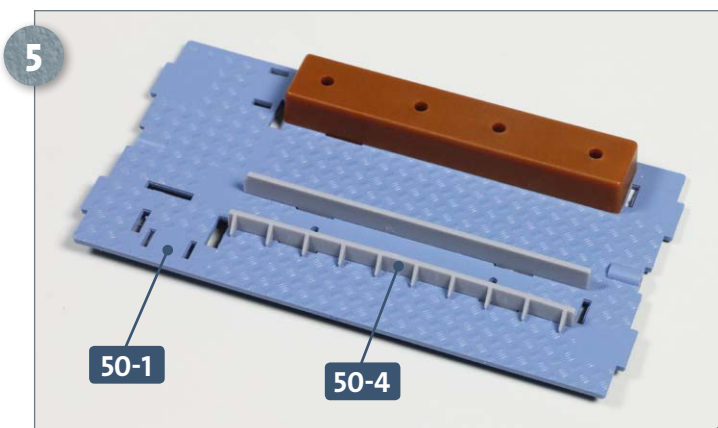
With the bunk base attached to the deck, take the support **50-3**.



Add some glue to the tabs on the support **50-3** and insert them into the slots in the deck **50-1**, as shown above. Note the small notch at one end of the part, which is fitted to the left (see circle).



Now take support **50-4** and apply some glue to the two tabs.



Insert the glued tabs of the support **50-4** into the corresponding slots in the deck **50-1**, as shown in the photo.

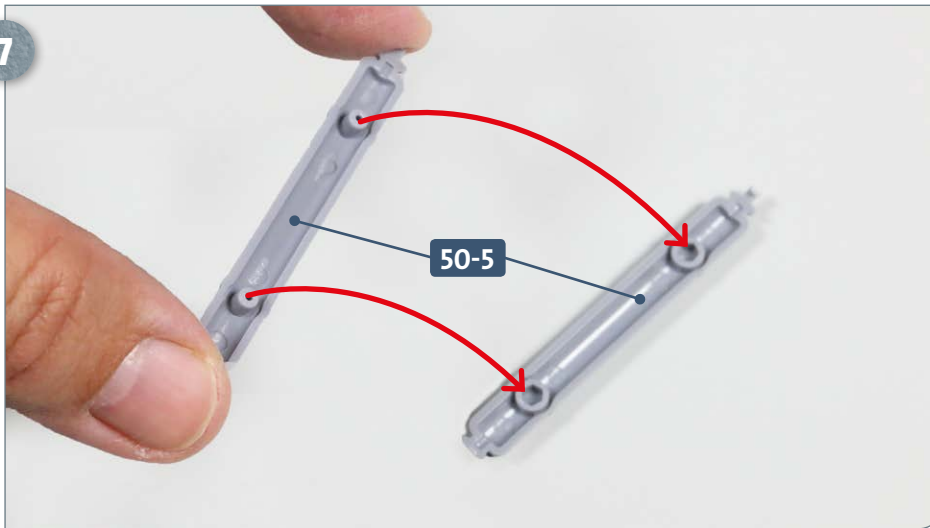


Separate both halves of the compressed air bottle from the frame **50-5**. Use some sandpaper or fine file to smooth away any remains of the attachment points.



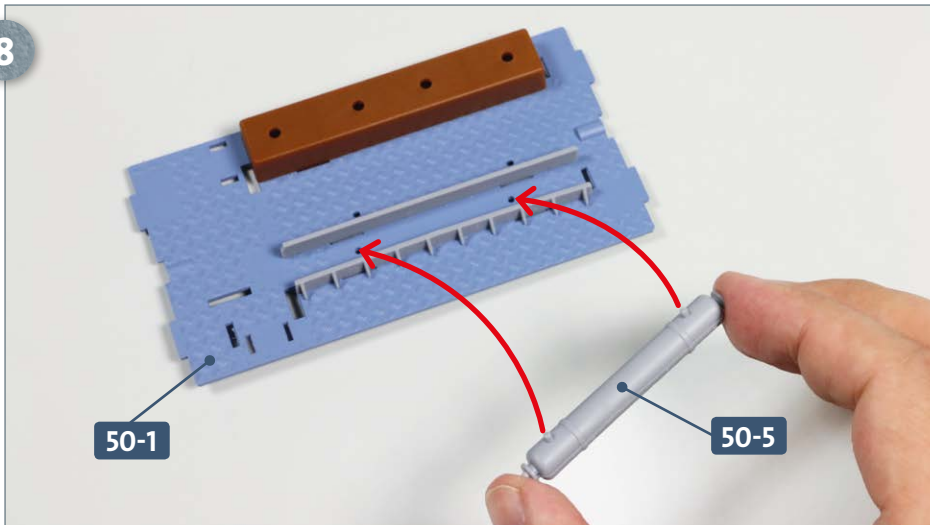
## Kit 50: Non-commissioned officers' compartment (I)

7



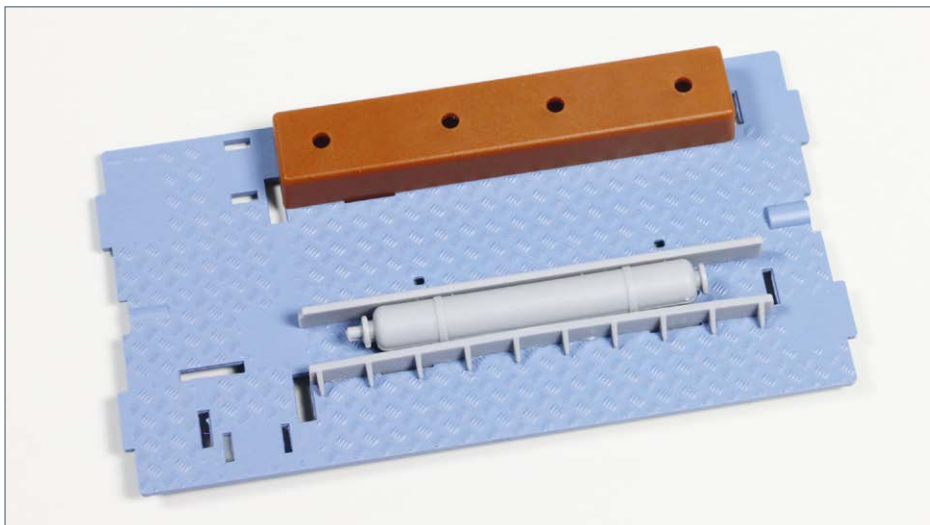
Apply some glue to the pegs inside one half of the compressed air bottle **50-5** and insert these into the corresponding holes in the other half, as shown.

8



Next, apply some glue to the pegs on the underside of the compressed air bottle **50-5** and insert into the two corresponding holes in the deck **50-1**, as indicated by the arrows.

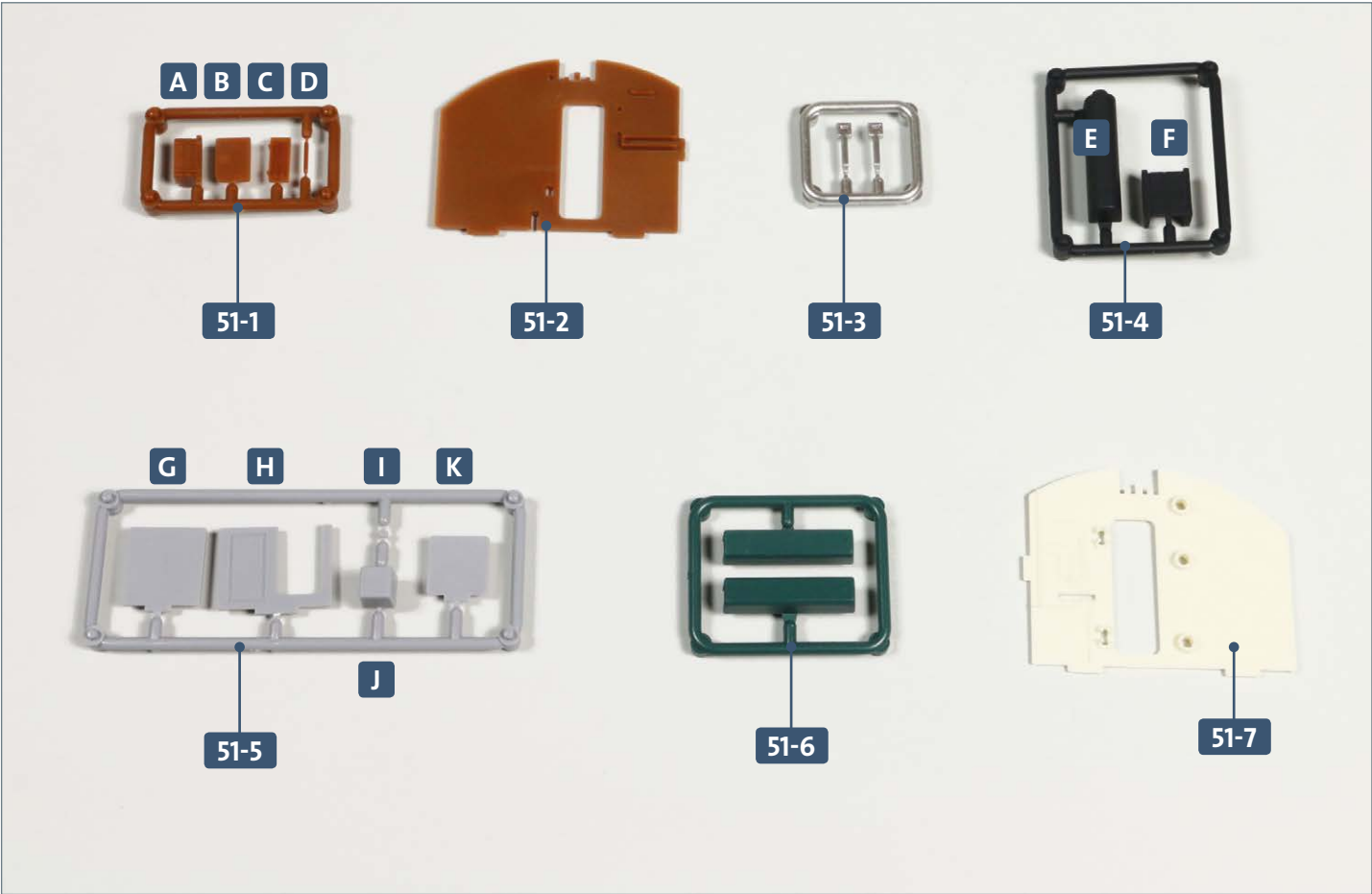
### COMPLETED WORK



The first four components are now attached to the deck of the compartment.

# Kit 51: Non-commissioned officers' compartment (II)

The assembly of the fourth compartment continues in this kit with the addition of a supply box, a locker and several partitions, which are assembled and attached to the deck along with two benches.

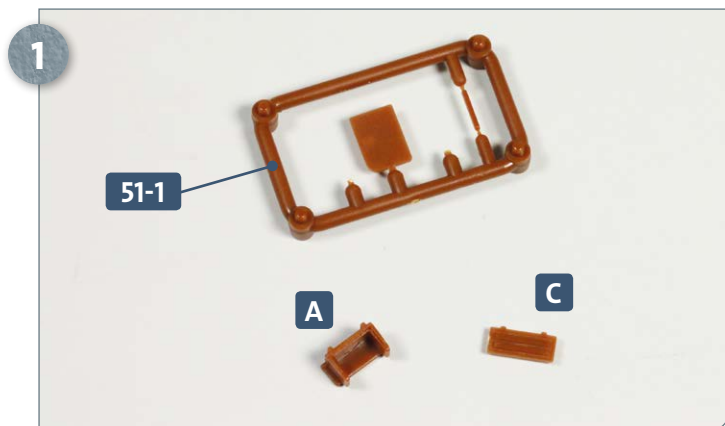


Parts reference list	
Part no.	Name
51-1	Frame (A, B, C, D)
51-2	Bulkhead
51-3	Bench supports
51-4	Frame (E, F)
51-5	Frame (G, H, I, J, K)
51-6	Benches
51-7	Galley bulkhead

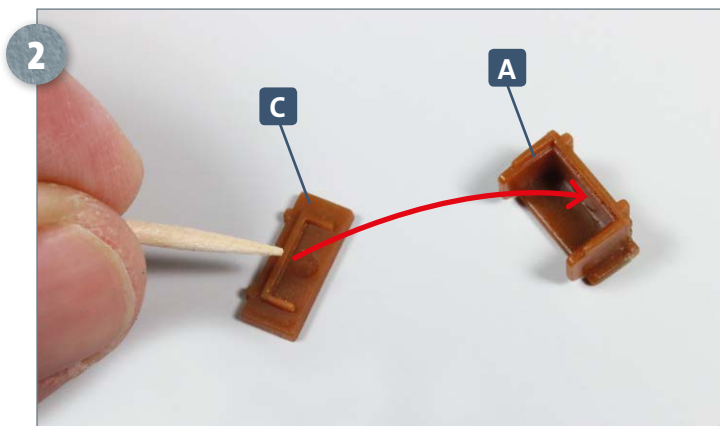


## Kit 51: Non-commissioned officers' compartment (II)

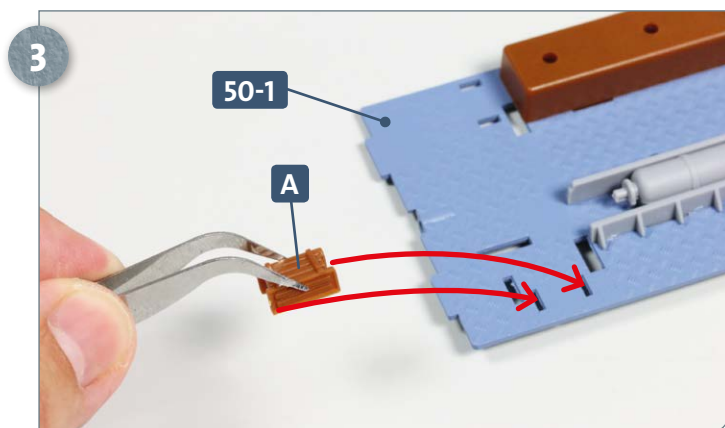
### STAGE 1 → Continuing the fourth compartment



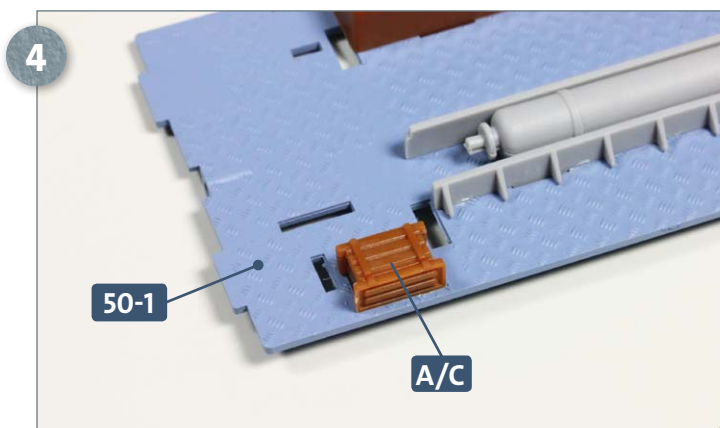
Taking frame 51-1, detach parts A and C from it. Remove any traces of the attachment points.



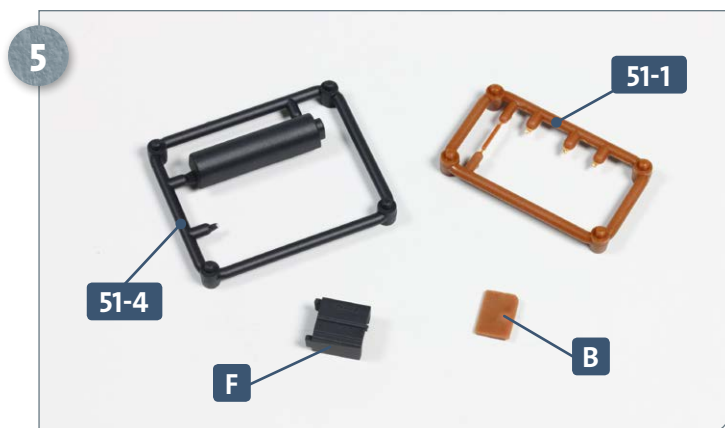
Add some glue to the edge of the raised part on the inside of C before joining it to A, as indicated by the arrow.



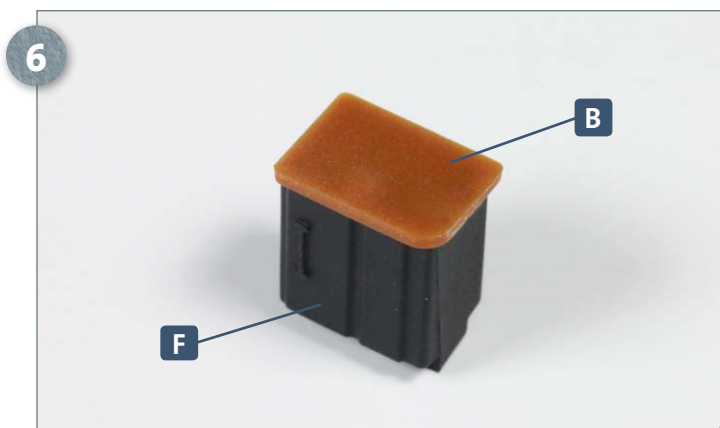
Apply some glue to the two pegs on the underside of part A and insert into the slots in the deck 50-1, as shown by the arrows.



The supply box comprising parts A and C is fixed to the deck 50-1.

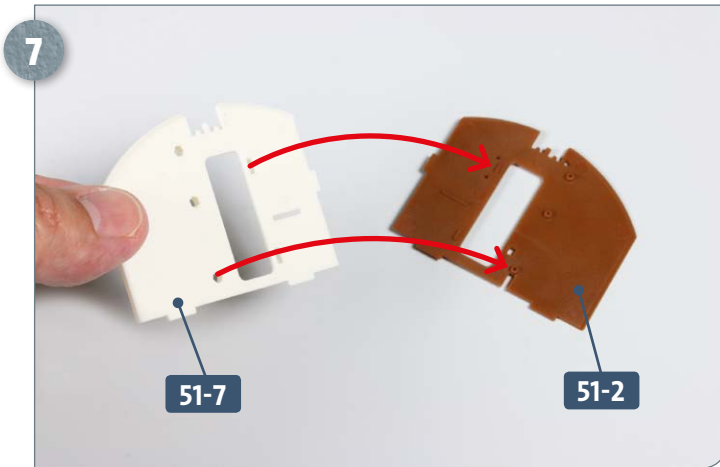


Remove part F from frame 51-4 and part B from frame 51-1. These will be combined with the worktop to create a locker.

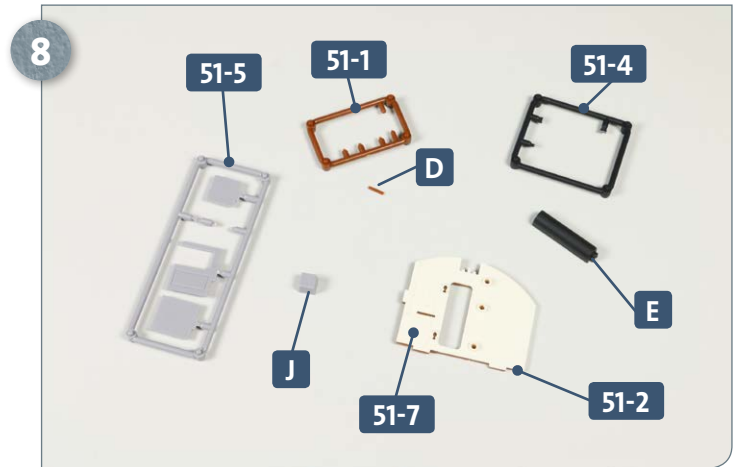


Apply some glue to the small peg on the top of part F before inserting into the corresponding recess on the underside of B.

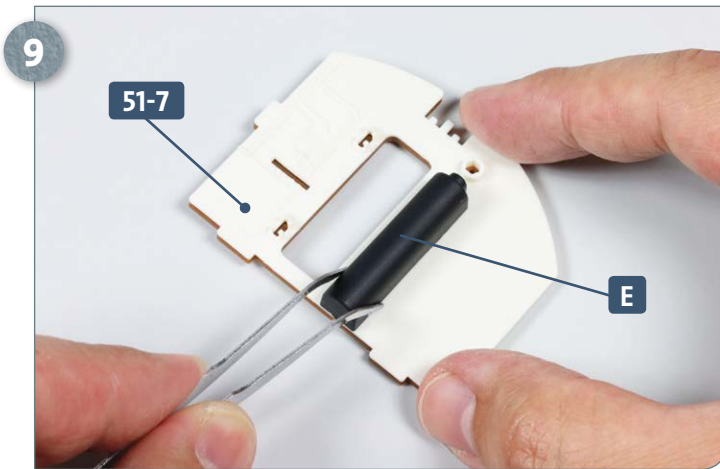
## Kit 51: Non-commissioned officers' compartment (II)



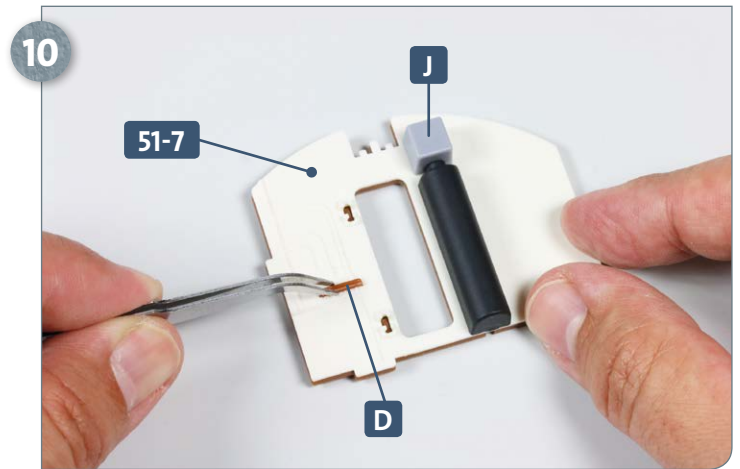
Take the two bulkheads **51-2** and **51-7**. After test-fitting, apply some glue to the three pegs on bulkhead **51-2** and secure the galley bulkhead **51-7** over it, as indicated by the arrows.



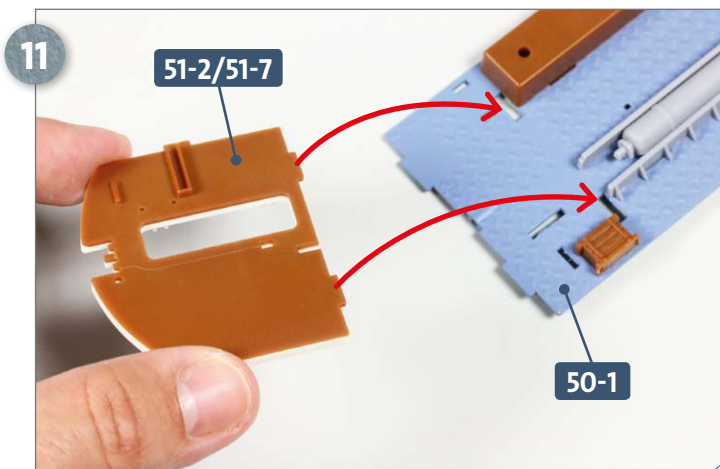
Bulkheads **51-2** and **51-7** are shown joined together. When needed, detach the following from their respective frames: part **D** from frame **51-1**, part **E** from frame **51-4** and part **J** from frame **51-5**.



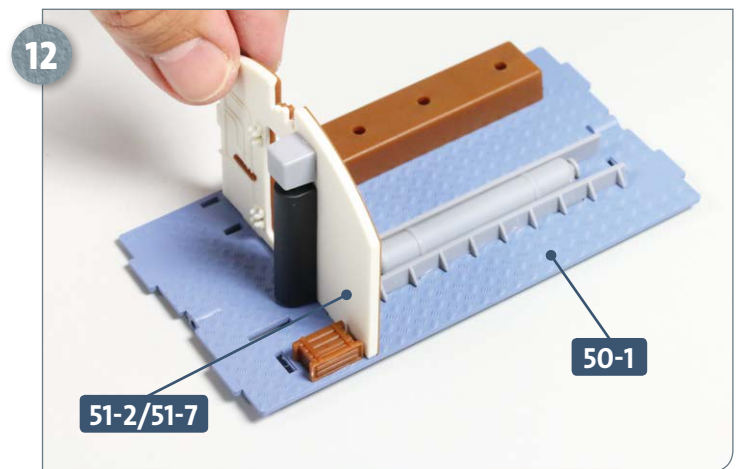
Apply some glue to the two pegs on the back of part **E** then insert into the slots in partition **51-7**, as shown.



Repeat the process to glue parts **J** and **D** to partition **51-7**, in the positions pictured above.

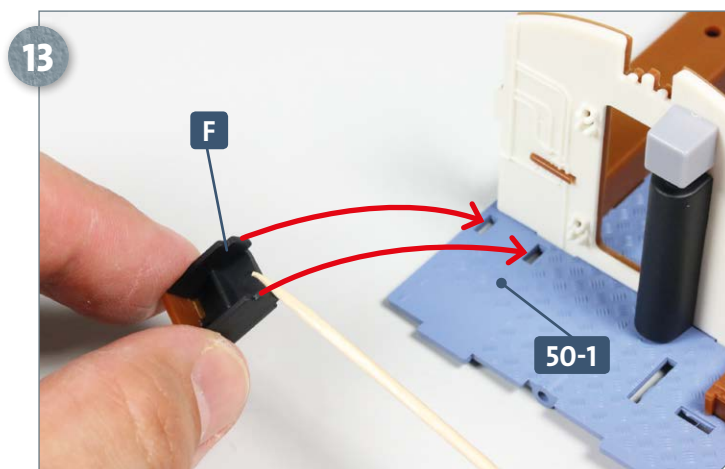


Apply some glue to the two pegs on the bottom of the partition assembly **51-2/51-7** before fitting them into the slots in the deck **50-1**, as shown by the arrows.

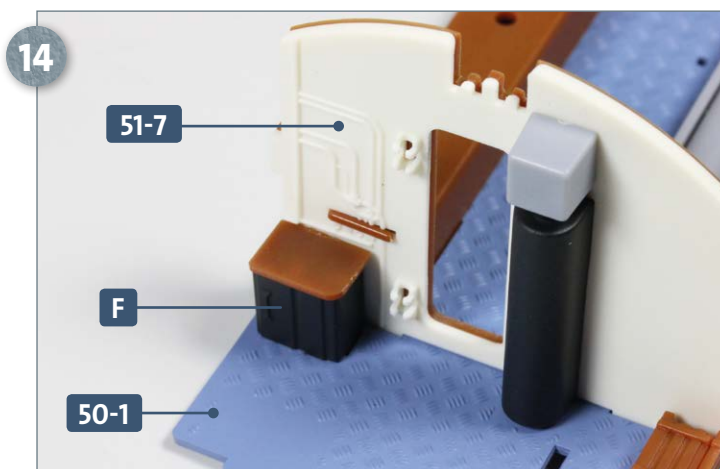


This photograph shows the partition **51-2/51-7** correctly fixed to the deck **50-1**.

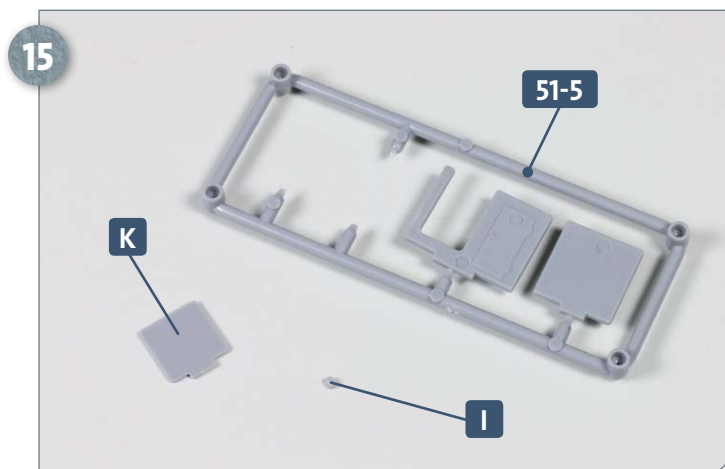
## Kit 51: Non-commissioned officers' compartment (II)



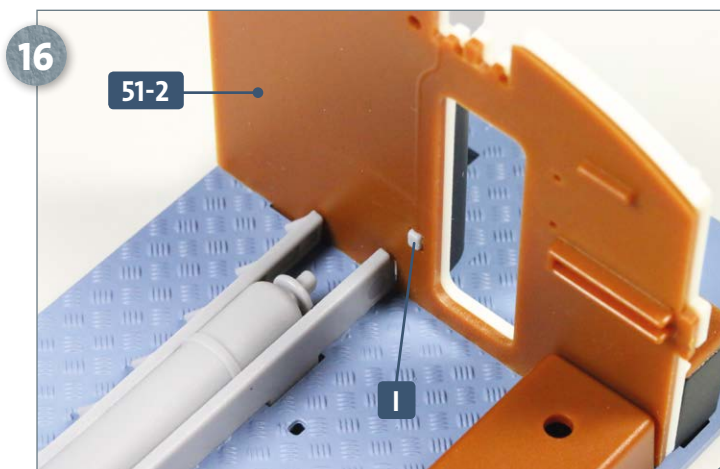
Next apply some glue to the tabs on the underside of part **F**. Insert into the slots in the deck **50-1**, as indicated by the arrows.



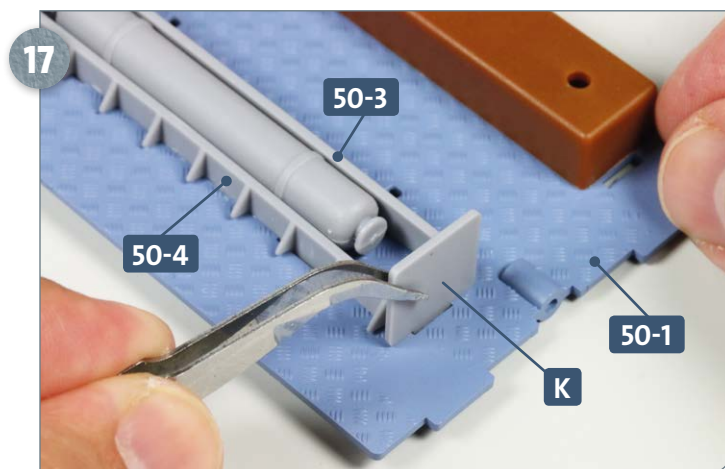
This photograph shows the locker **F** glued in position to the deck **50-1**, abutting the bulkhead **51-7**.



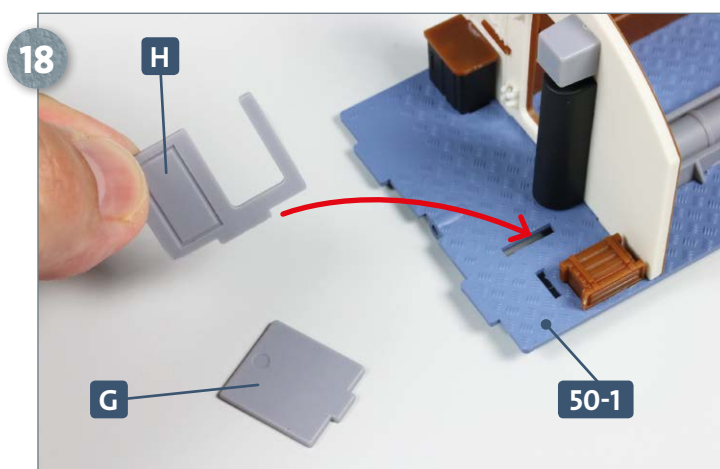
Next, parts **I** and **K** are detached from frame **51-5**. Before removing part **I**, study the photograph in the next step, which shows part **I** in position.



Glue part **I** into the small recess in the bulkhead **51-2**, shown above.



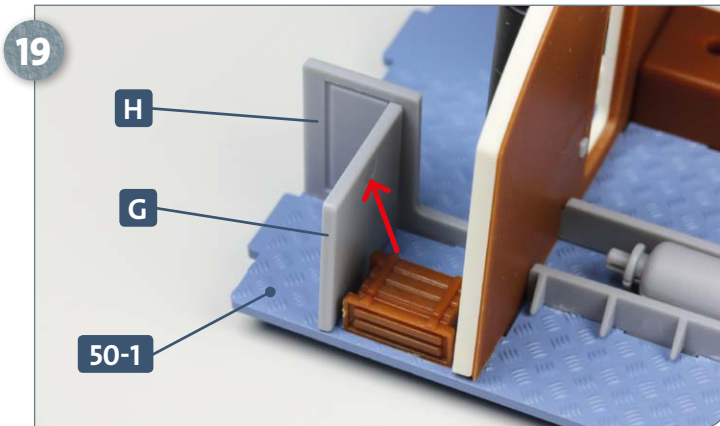
Apply some glue to the wide tab of part **K** then insert into the slot in the deck **50-1**, found next to the supports **50-3** and **50-4**.



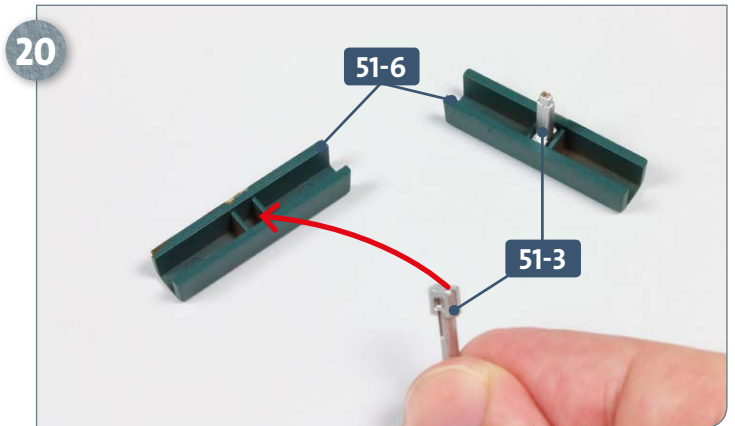
Separate parts **G** and **H** from frame **51-5**. Apply some glue to the tab at the base of **H** and fit it into the slot in the deck **50-1**, as shown.



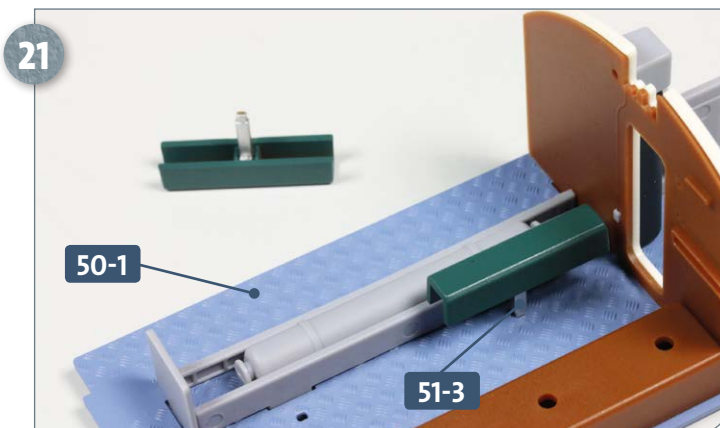
## Kit 51: Non-commissioned officers' compartment (II)



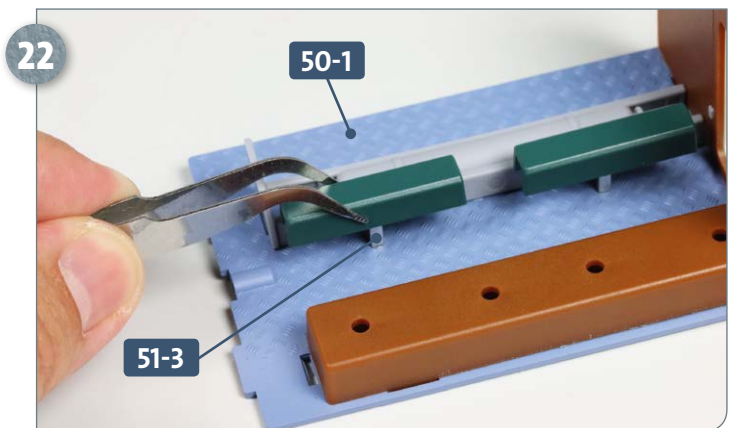
Repeat the process with part **G**. Test-fit the part in place to ensure the correct orientation: the circular recess (indicated by the arrow) should be in the place shown. The end of part **G** should sit up against **H**.



Remove the two bench seats from frame **51-6** and their supports from frame **51-3**. Apply some glue to the tops of the supports before fitting them into the bottom of the benches, as shown.

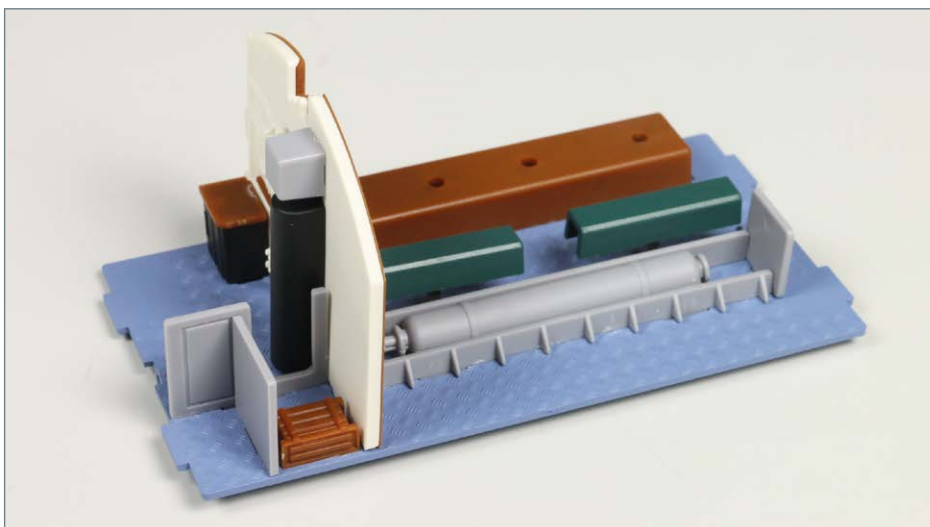


Apply some glue to the bottom of one of the supports **51-3** and insert into the hole in the deck **50-1**, as pictured.



The support **51-3** of the second bench is glued to the deck **50-1** next to the first.

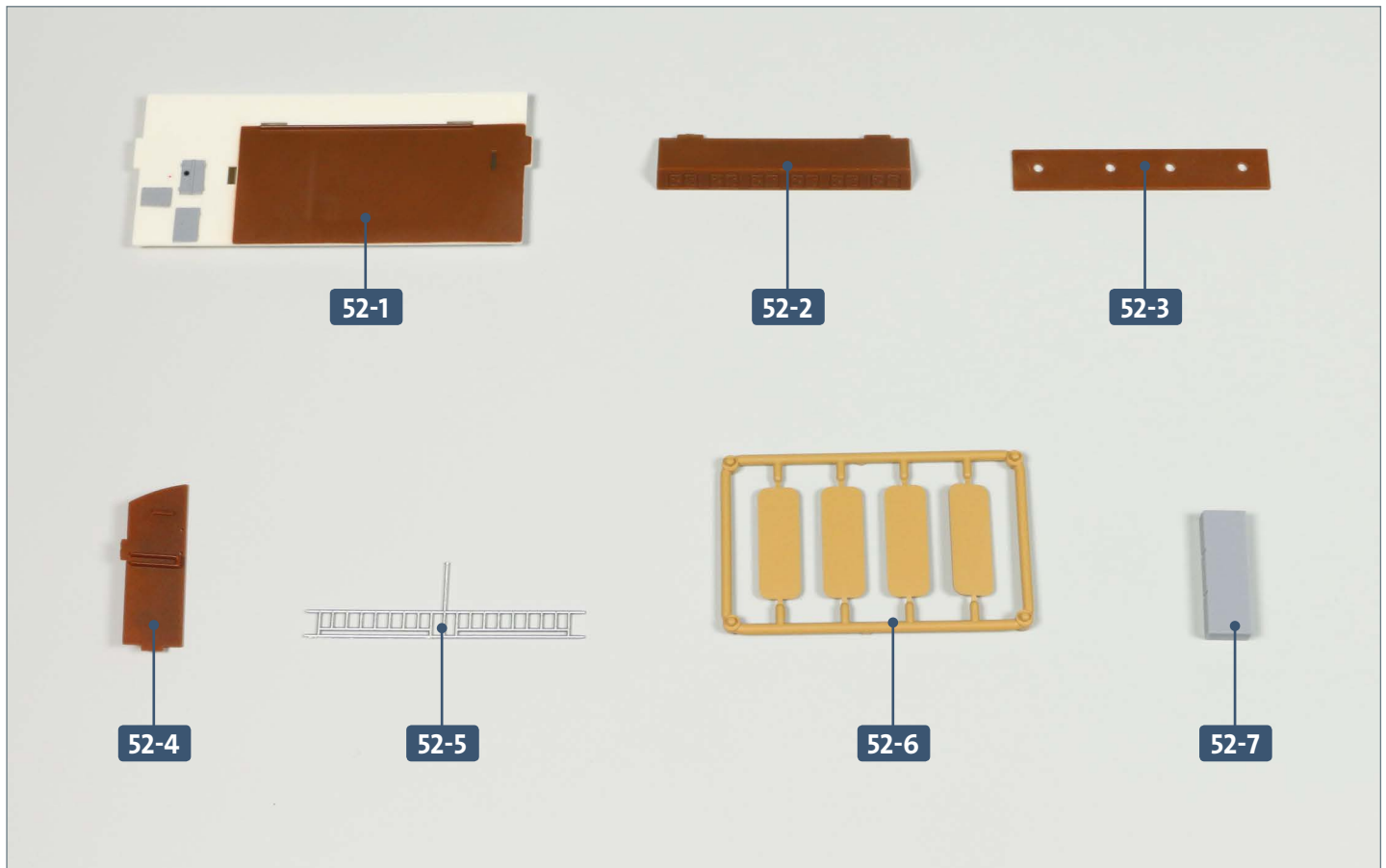
### COMPLETED WORK



The compartment is gradually taking shape, with the addition of partition bulkheads, a locker, supply box and benches.

# Kit 52: Non-commissioned officers' compartment (III)

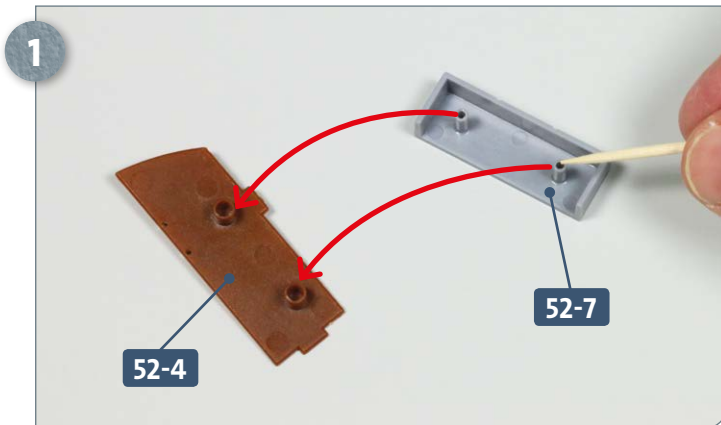
In this kit, the NCOs' bunks are assembled and fixed to the deck of the compartment. Storage compartments are attached to the aft bulkhead.



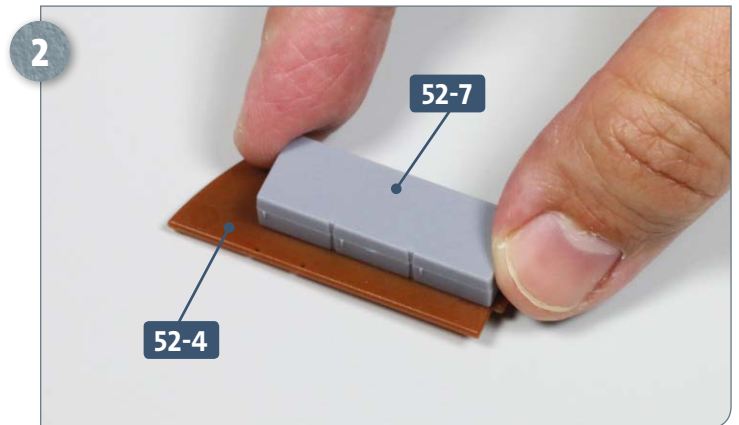
Parts reference list	
Part no.	Name
52-1	Aft bulkhead, fourth compartment
52-2	Storage
52-3	Bunk support
52-4	Side bulkhead
52-5	Bunk railings
52-6	Bunks
52-7	Locker

## Kit 52: Non-commissioned officers' compartment (III)

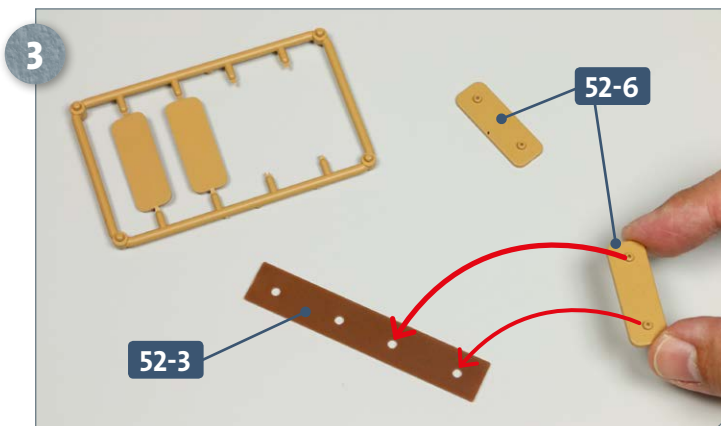
### STAGE 1 → Fourth compartment (continued)



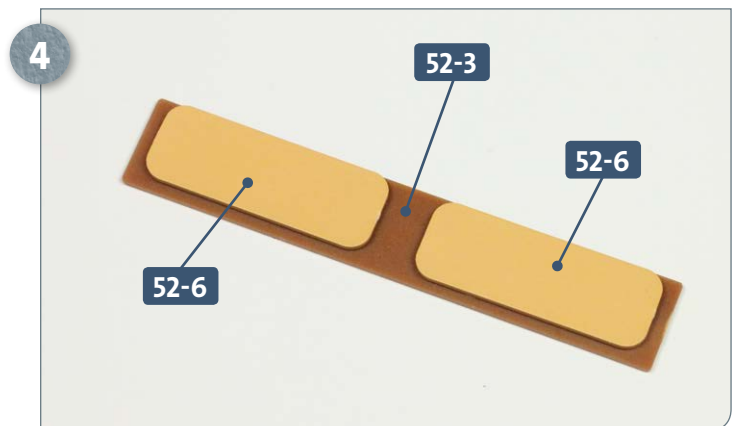
Place the side bulkhead **52-4** on your work surface, orientated as shown. Next, take the locker **52-7** and apply some glue to both of the pegs.



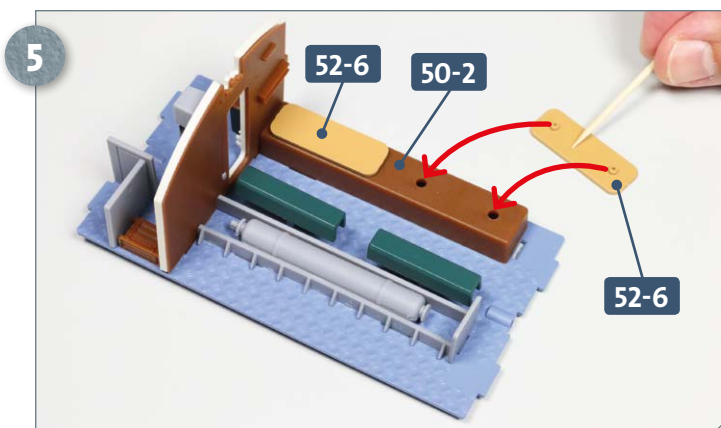
Fit the glued pegs into the corresponding holes in the bulkhead **52-4**.



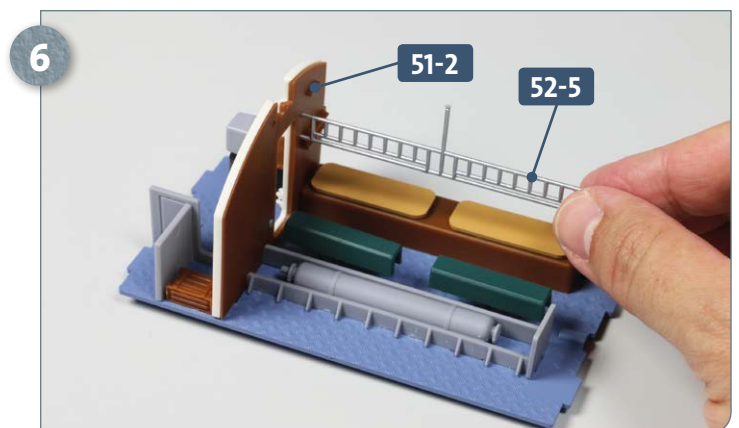
Next, take the bunk support **52-3**. Separate two bunks **52-6** from the frame. Add some glue to the pegs on the underside of the first bunk, and insert into the holes in the bunk support, as indicated by the arrows.



Add some glue to the underside of the second bunk **52-6** and attach to the remaining space on the bunk support **52-3**.



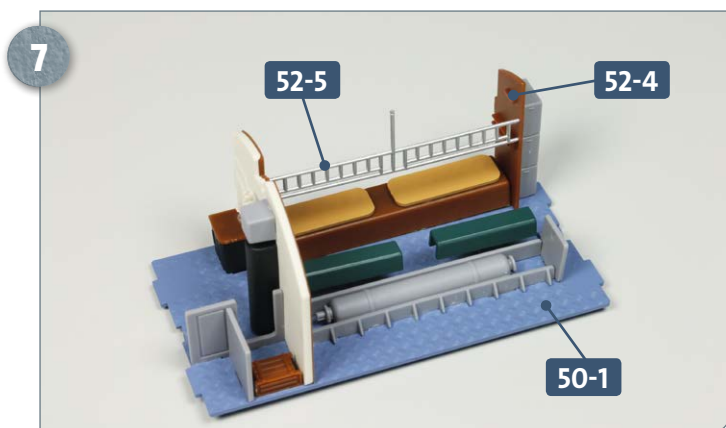
Remove the two remaining bunks **52-6** from the frame. These are glued to the bunk base **50-2**, as pictured above.



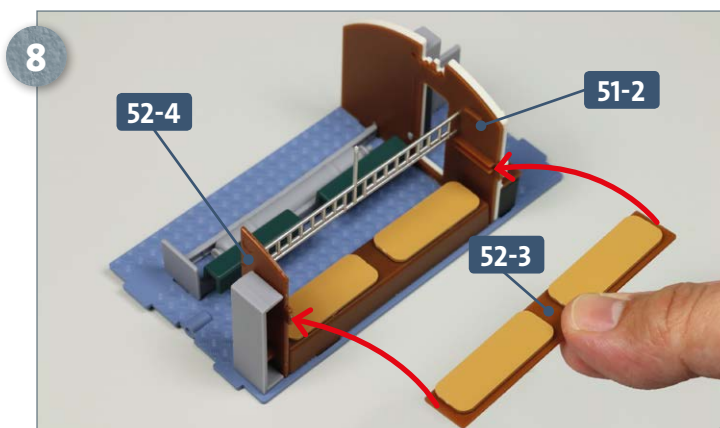
Apply some glue to both rungs at one end of the bunk railing **52-5** and insert into the corresponding holes in the bulkhead **51-2**.



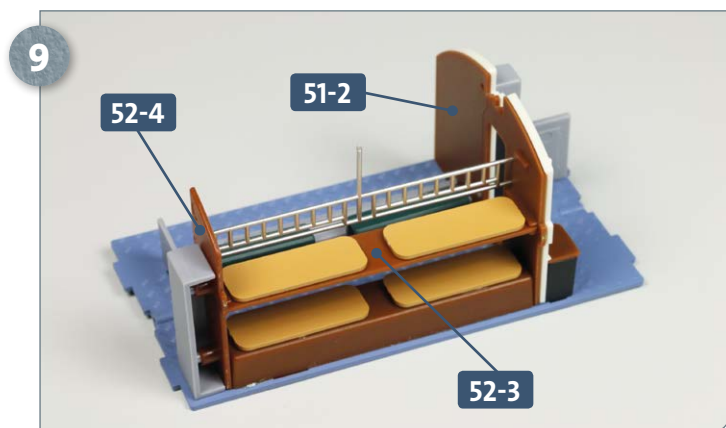
## Kit 52: Non-commissioned officers' compartment (III)



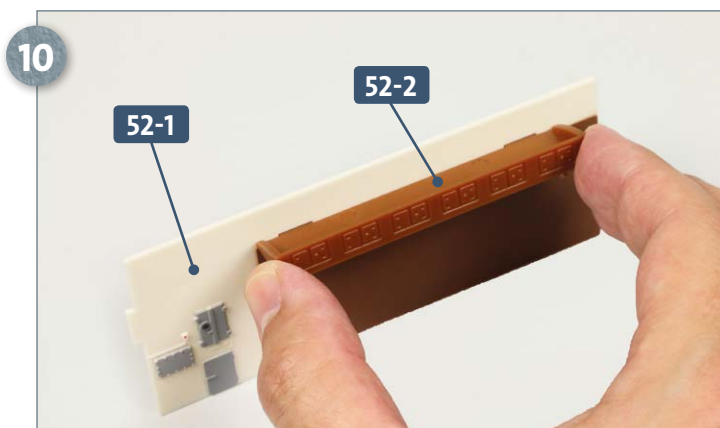
Apply a little glue to the other end of the bunk railing **52-5** and to the tab on the base of the bulkhead **52-4**. Then, at the same time, insert the tab on the base of bulkhead **52-4** into the deck **50-1** and the ends of railing **52-5** into the holes in bulkhead **52-4**, as picture above.



Now apply some glue along the two short edges of the bunk support **52-3** before slotting in place on bulkheads **51-2** and **52-4**, as indicated by the arrows.

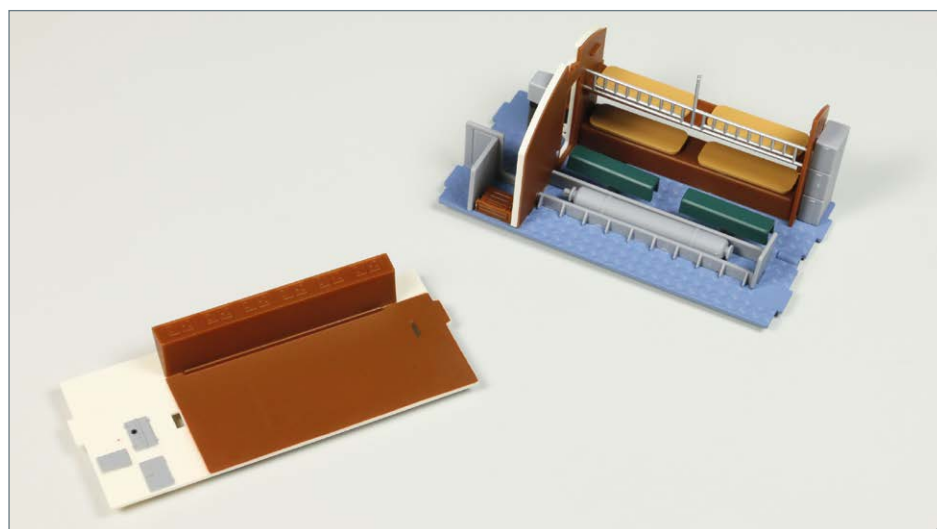


This photograph shows the bunk support **52-3** correctly attached to bulkheads **51-2** and **52-4**.



Finally, apply some glue to the pegs at the back of the storage compartments **52-2** and insert into the corresponding slots on the aft bulkhead **52-1**, as pictured.

### COMPLETED WORK



The NCO accommodation now has new bunks added. Keep the aft bulkhead assembly **52-1** safely aside until it is needed in a later kit.