

 hachette
PARTWORKS LTD

U 96

U-BOAT

Pack 22

Kits 85-88



BUILD THE ICONIC WORLD WAR II U-BOAT

U 96

U-BOAT

Pack 22

Assembly Instructions

Kit 85: Torpedo tube 5

Kit 86: Port electric motor

Kit 87: Another torpedo

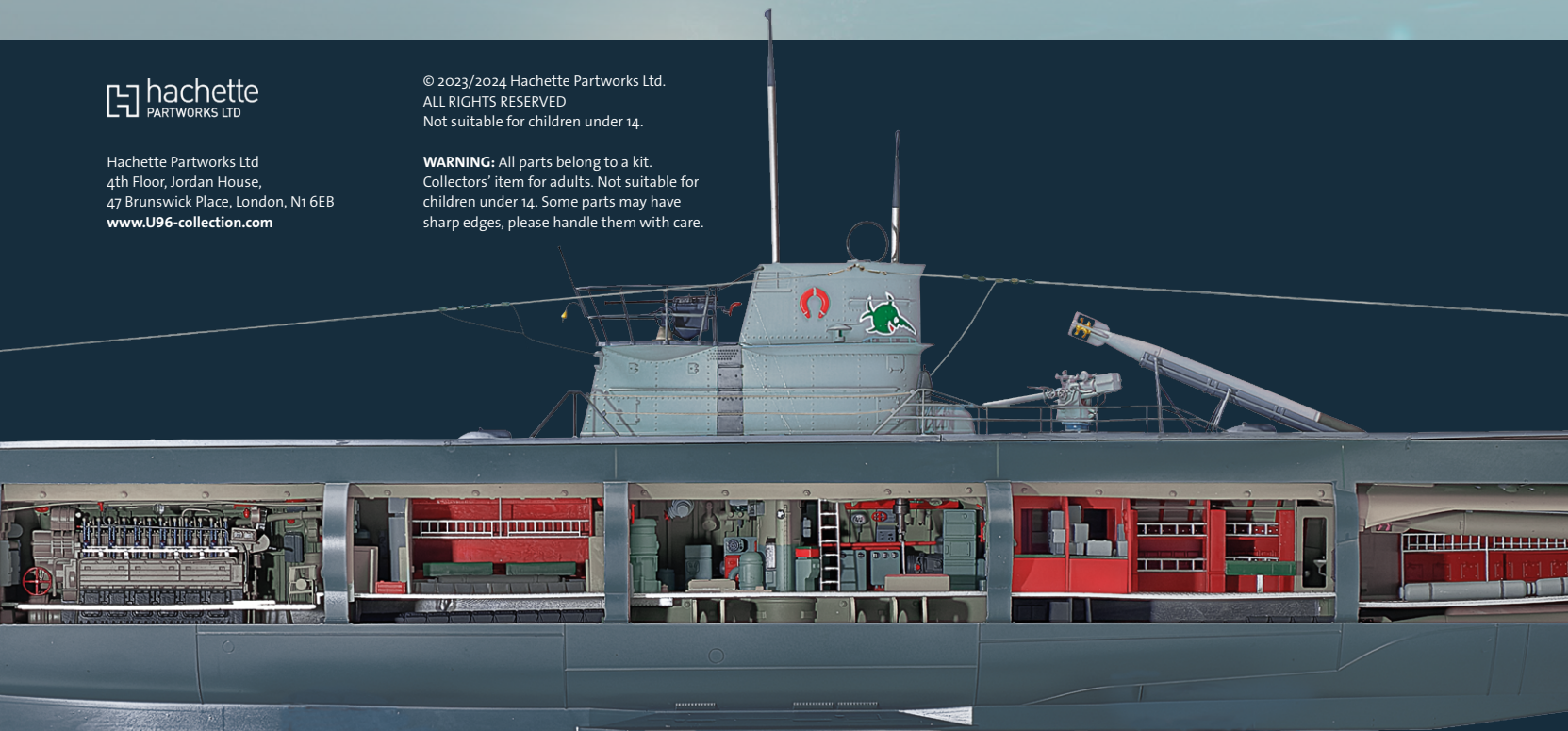
Kit 88: Hull section



Hachette Partworks Ltd
4th Floor, Jordan House,
47 Brunswick Place, London, N1 6EB
www.U96-collection.com

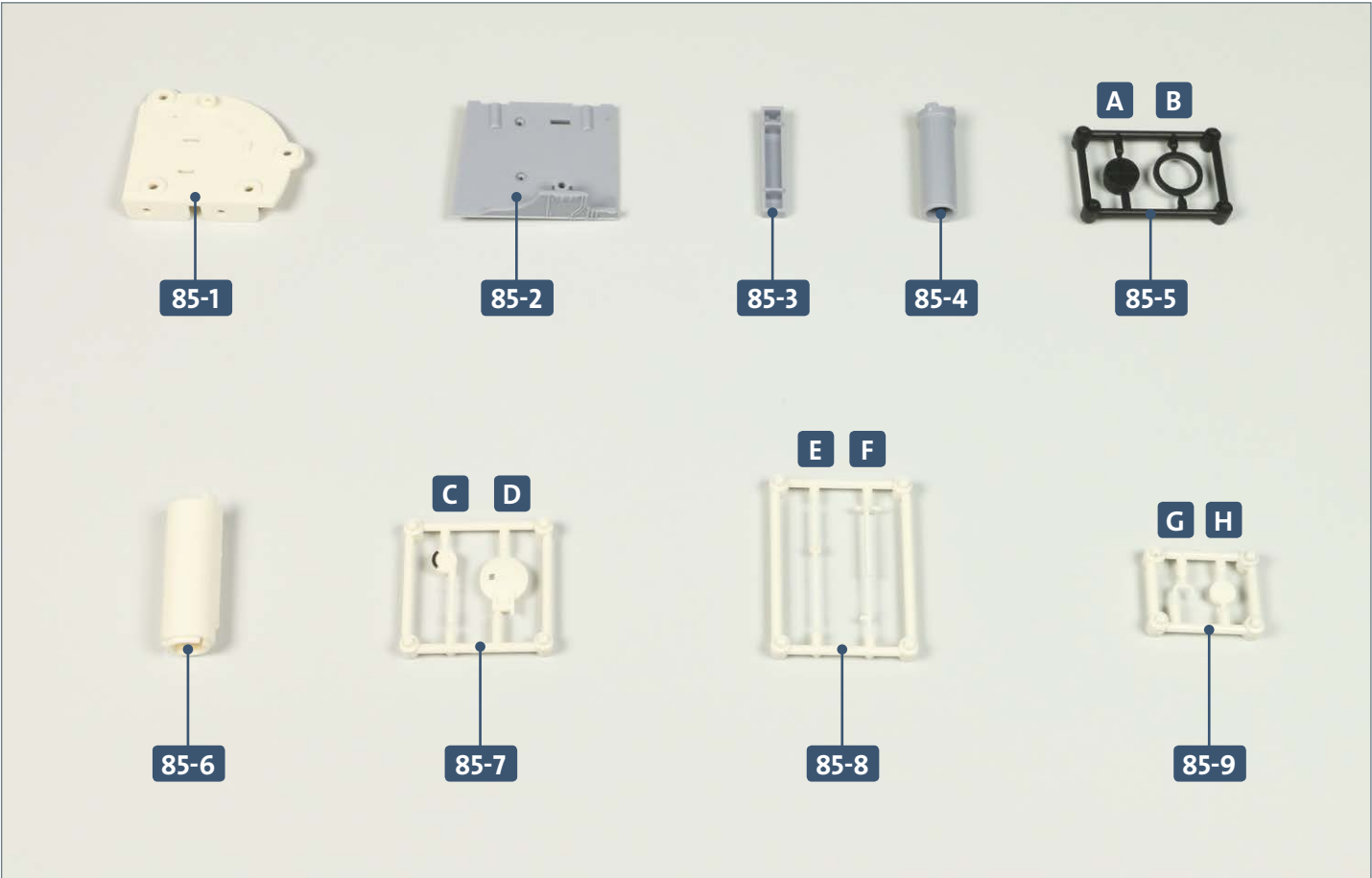
© 2023/2024 Hachette Partworks Ltd.
ALL RIGHTS RESERVED
Not suitable for children under 14.

WARNING: All parts belong to a kit.
Collectors' item for adults. Not suitable for
children under 14. Some parts may have
sharp edges, please handle them with care.



Kit 85: Torpedo tube 5

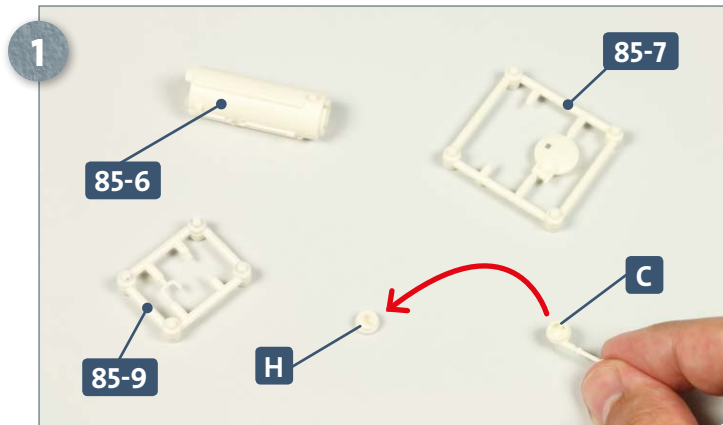
In this kit, you will assemble various components of the electric motor room. Torpedo tube 5 will be built and attached to the endplate, and a bracket and compressed air cylinder attached to the ballast tank plate.



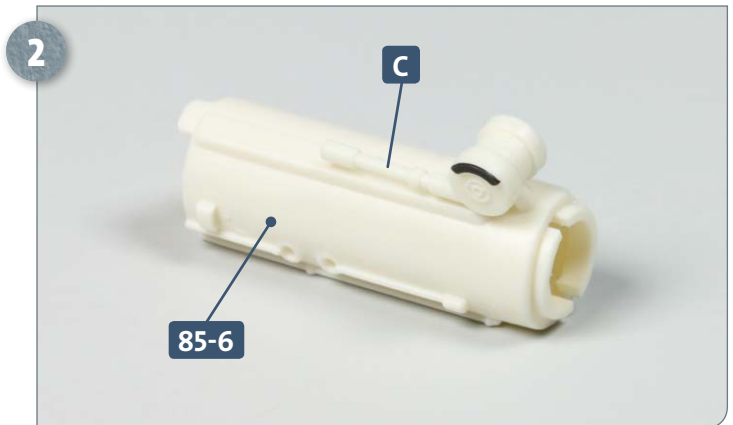
Parts reference list	
Part no.	Name
85-1	Endplate
85-2	Ballast tank plate
85-3	Torpedo tube bracket
85-4	Compressed air cylinder
85-5	Frame (A, B)
85-6	Torpedo tube 5
85-7	Torpedo tube cover and changeover valve (C, D)
85-8	Lines (E, F)
85-9	Frame (G, H)

Kit 85: Torpedo tube 5

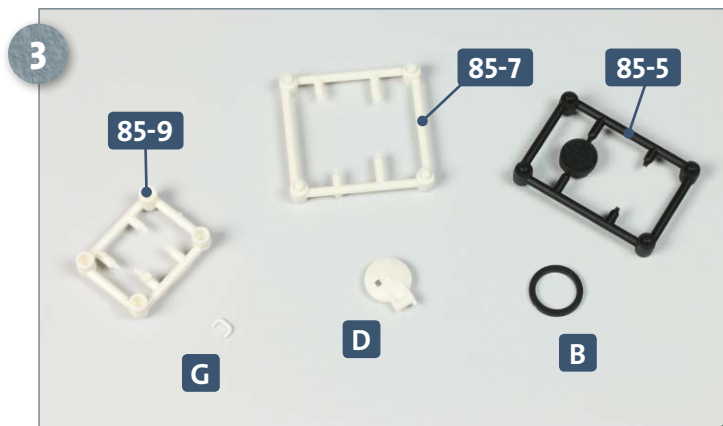
STAGE 1 → Working on the torpedo tube and ballast tank



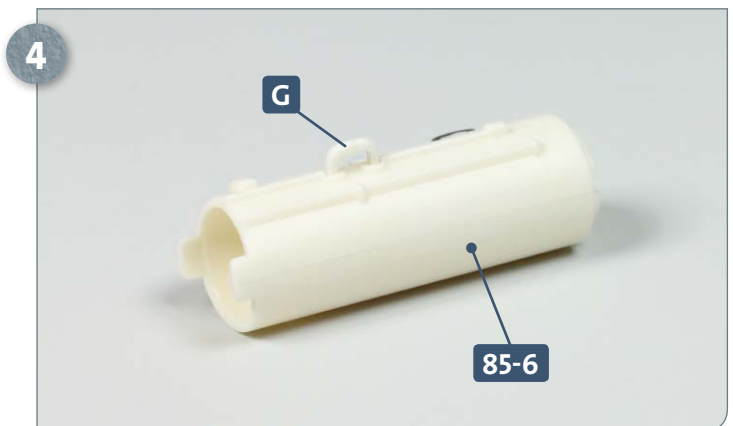
Have ready the torpedo tube **85-6**. Detach part **H** from frame **85-9** and the changeover valve **C** from frame **85-7**. Apply some glue to the edge of part **C** and attach it to part **H**, as pictured above and in the next step. Note that the notch in parts **C** and **H** align to form a slot.



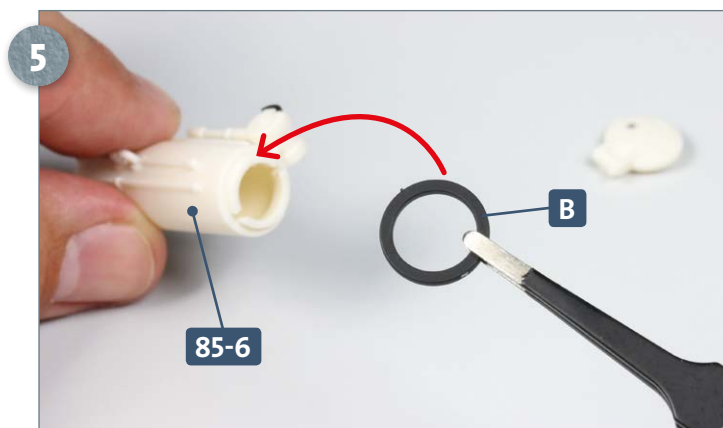
Glue the assembled changeover valve **C/H** to the torpedo tube **85-6**, as shown above.



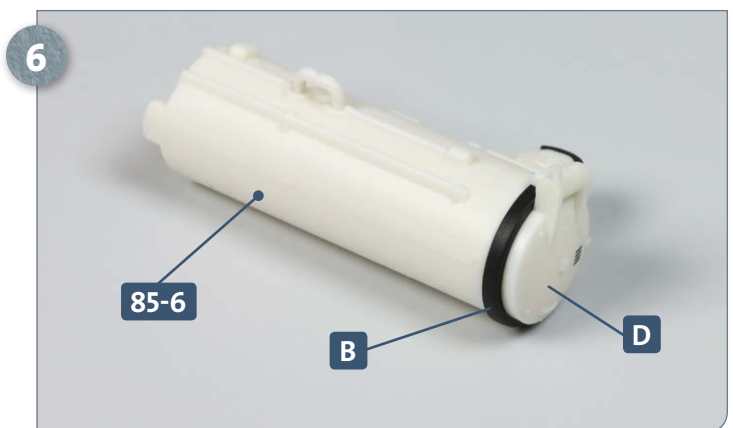
Remove part **G** from frame **85-9**, the torpedo tube cover **D** from frame **85-7** and part **B** from frame **85-5**, as pictured.



Apply some glue to both ends of part **G** and insert them into the small holes in the torpedo tube **85-6**, as shown.

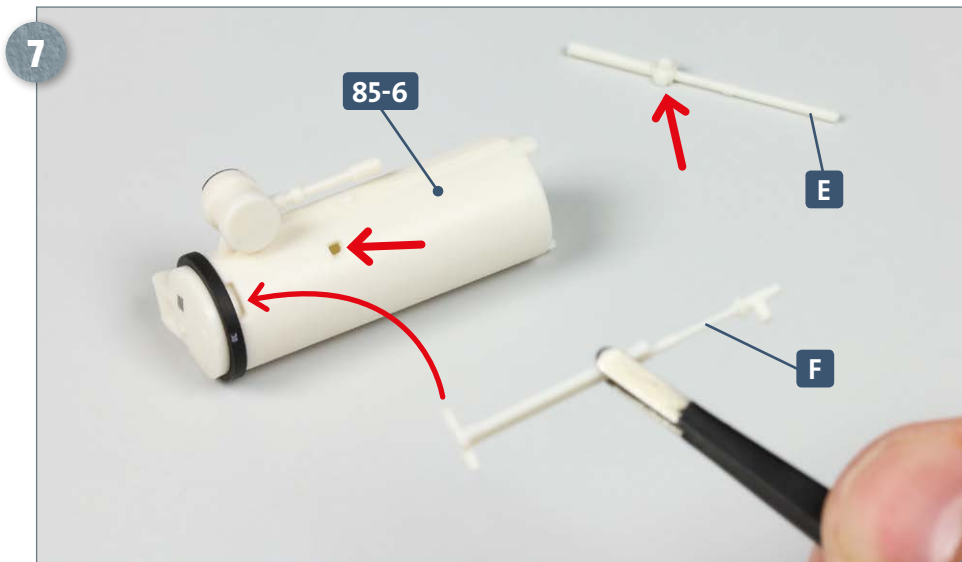


Apply a small amount of glue to the inner part of **B** and attach it to the end of the torpedo tube **85-6**, as indicated by the arrow.

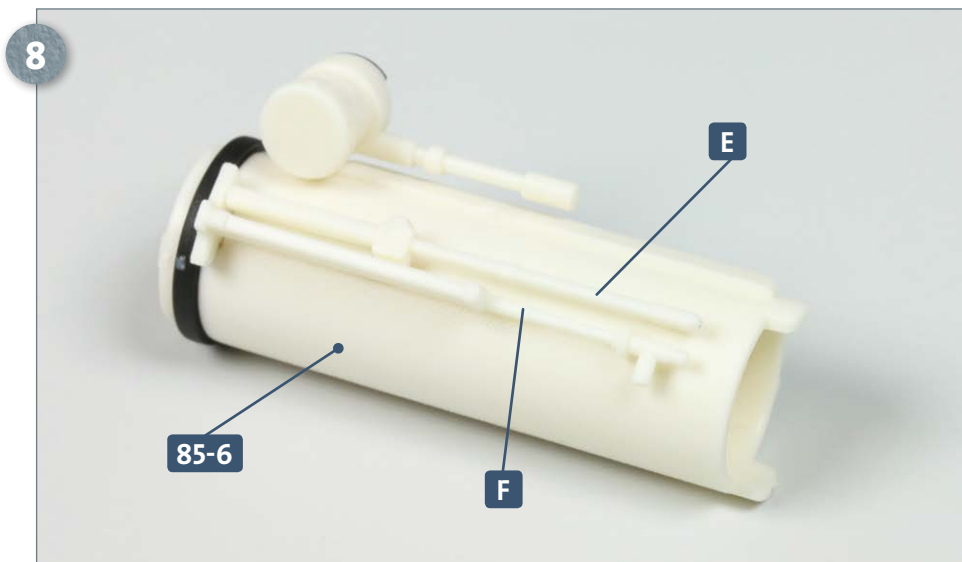


Apply some glue to the edge of the inside of the torpedo tube cover **D** and attach it to part **B** or to torpedo tube **85-6**, as shown above.

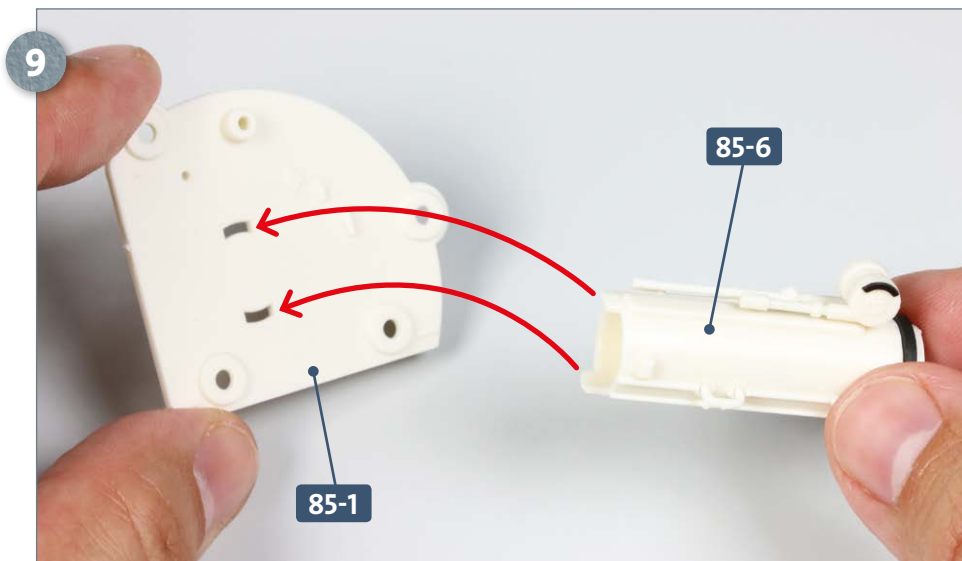
Kit 85: Torpedo tube 5



Remove lines **E** and **F** from frame 85-8. Apply a little glue to the wide end of **F** then insert into the recess on torpedo tube 85-6, as indicated by the curved arrow. The two straight arrows point to the places where line **E** is connected to the torpedo tube.



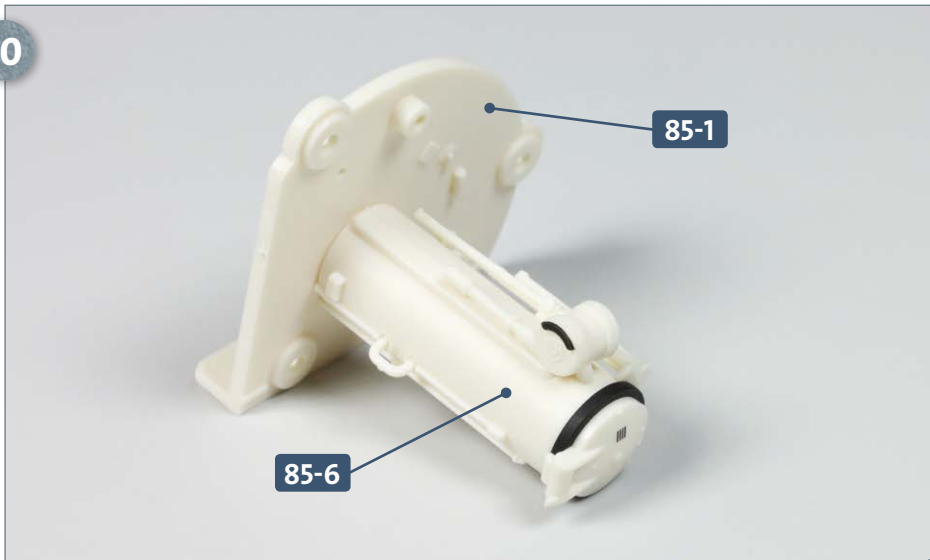
This photo shows lines **E** and **F** correctly attached to the torpedo tube 85-6.



Apply some glue to the two wide pegs at the end of the torpedo tube 85-6 then insert into the slots on the end of the endplate 85-1, as indicated by the two arrows.

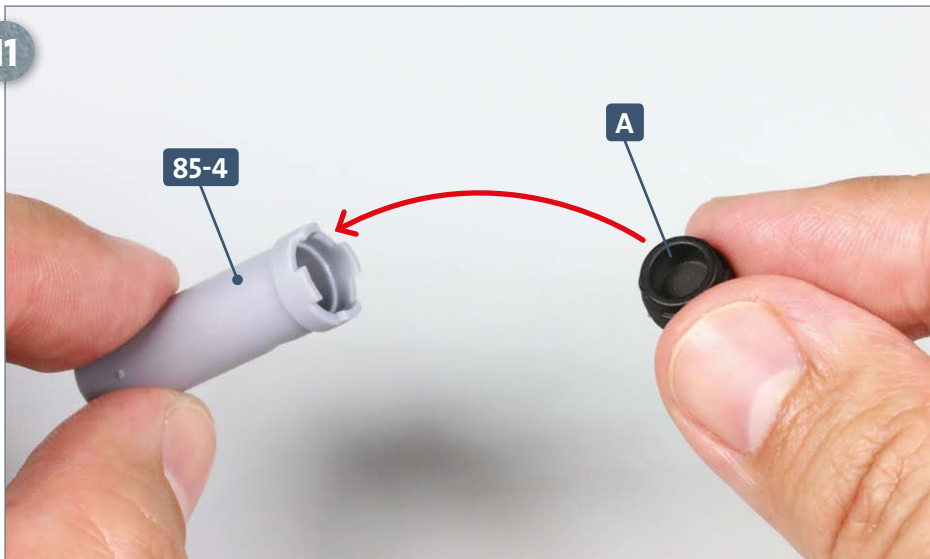
Kit 85: Torpedo tube 5

10



This photo shows the torpedo tube **85-6** attached to the endplate **85-1**.

11



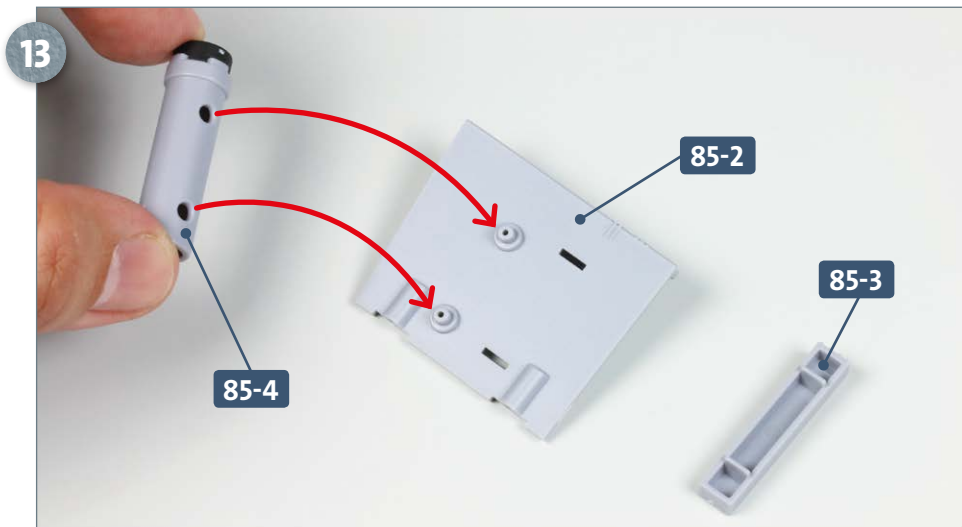
Detach part **A** from frame **85-5**. Apply a small amount of glue to the edge of part **A**, then insert into the wider end of the compressed air cylinder **85-4**, as shown.

12

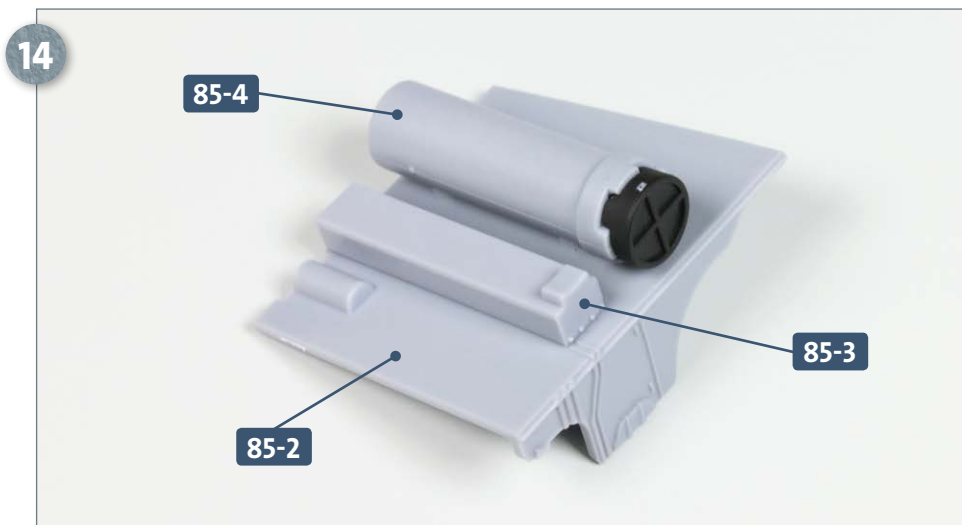


This photograph shows part **A** attached to the air cylinder **85-4**.

Kit 85: Torpedo tube 5



Place the ballast tank plate **85-2** and bracket **85-3** on your work surface. Apply a little glue to the two pegs on the plate (indicated by the two arrows) before fitting the mounts of the compressed air cylinder **85-4** onto them.



After fitting the compressed air cylinder **85-4** to the ballast plate **85-2**, apply some glue to the two long pegs on the underside of bracket **85-3** and insert them into the slots of the ballast plate.

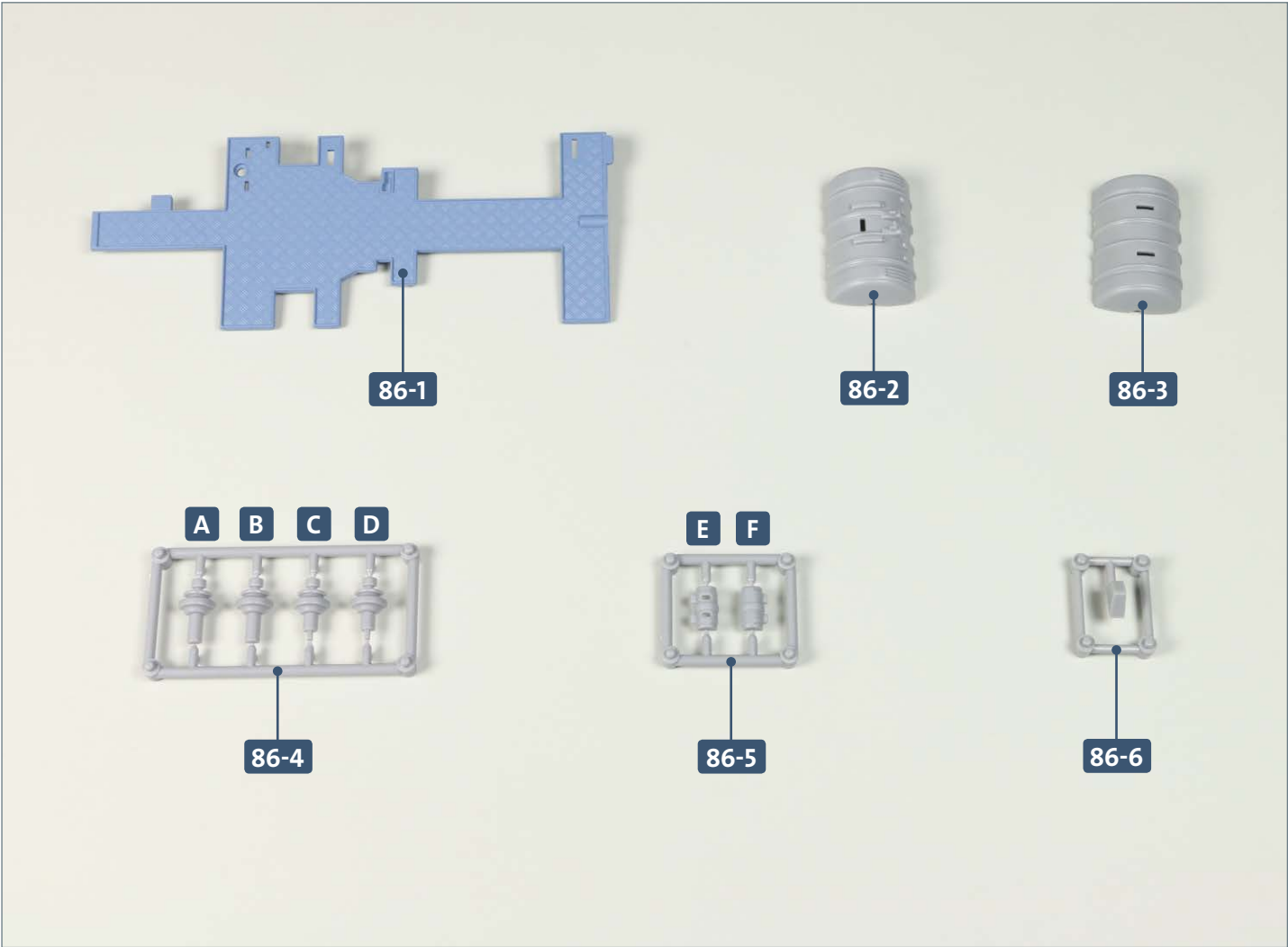
COMPLETED WORK



You have now completed two assemblies, which will be added to the engine room, along with other modules, in kit 91.

Kit 86: Port electric motor

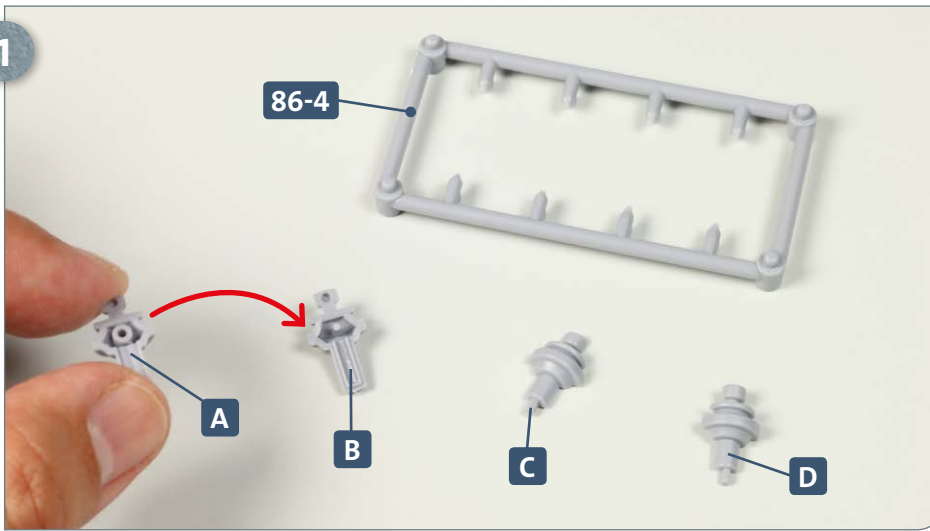
In this kit, work on components for the electric motor room continues with the assembly of the port (L) motor. The shaft is mounted and the converter and its bracket are attached to the motor.



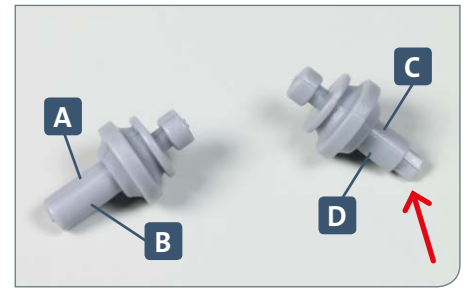
Parts reference list	
Part no.	Name
86-1	Deck panels for aft torpedo and motor rooms
86-2	Port (L) electric motor
86-3	Port (L) electric motor
86-4	Electric motor shaft
86-5	Converter
86-6	Converter bracket

STAGE 1 → Port electric motor

1



Separate the parts of the shaft, **A**, **B**, **C** and **D**, from frame **86-4**. Apply some glue to the peg of part **B** and join it to part **A**. Do the same with parts **C** and **D**. Note that there is a tab at the end of shaft **C/D** (see arrow, below). This creates two shafts – **A/B** and **C/D** (see inset photo, below).



2



Place the two halves of the port (L) electric motor **86-2** and **86-3** on your work surface. Fit shaft **A/B** into the recess on one side of **86-3** and shaft **C/D** into the recess on the other side of **86-3**, as indicated by the arrow.

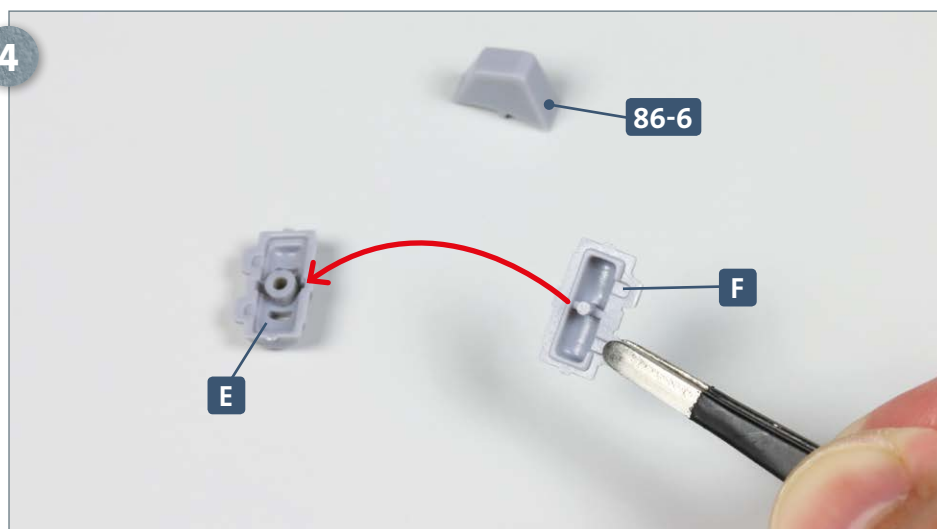
3



After noting the orientation of the parts, apply some glue to the two pegs on the inside of part **86-2** and fit these into the raised sockets of part **86-3**. The photograph shows the assembled motor with shafts **A/B** and **C/D** attached.

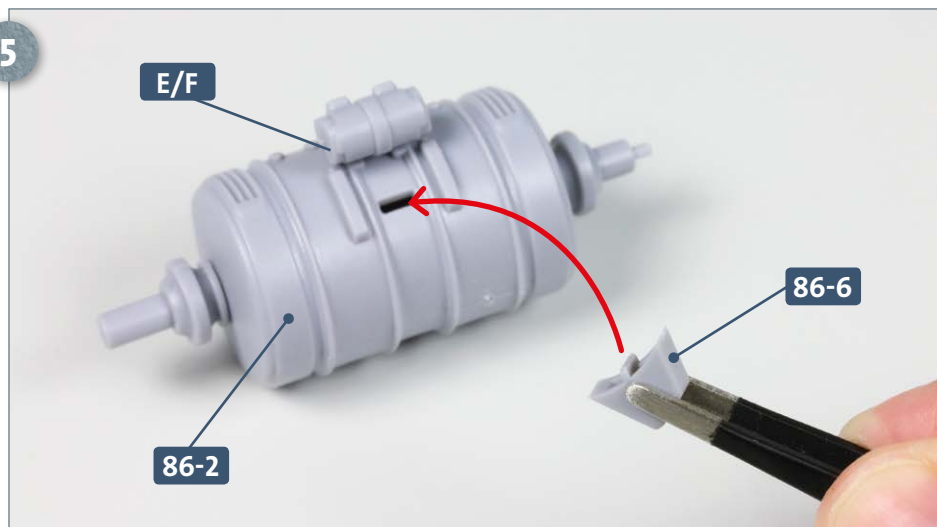
Kit 86: Port electric motor

4



Separate the bracket **86-6** from the frame. Detach the two halves of the converter, **E** and **F**, from frame **86-5**. Apply a little glue to the peg of part **F** and insert into the hole of part **E**, as shown by the arrow, left.

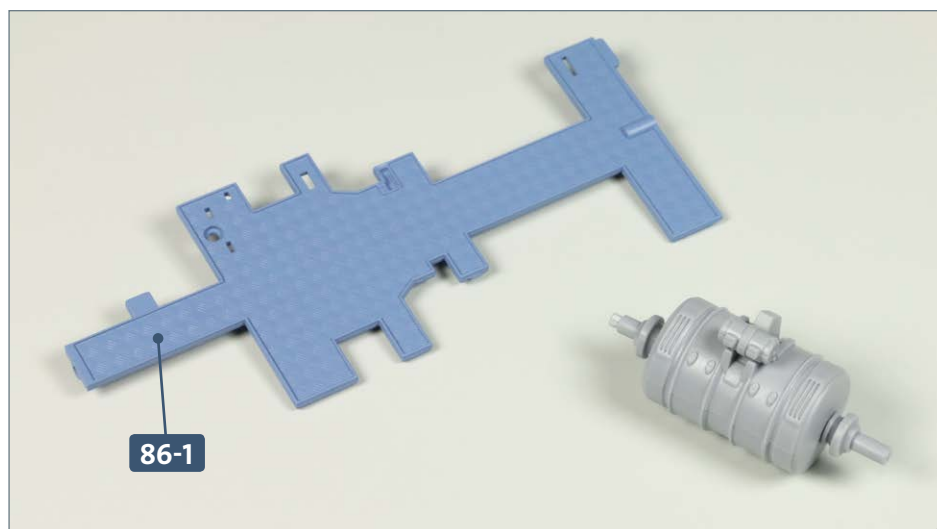
5



Apply glue to the two pegs on the electric motor **86-2**. Take the assembled converter **E/F** and place the two slots of part **E** over the pegs of **86-2**. Apply some glue to the peg of bracket **86-6** and insert into the slot of **86-2**. The inset image, below, shows the assembled bracket.



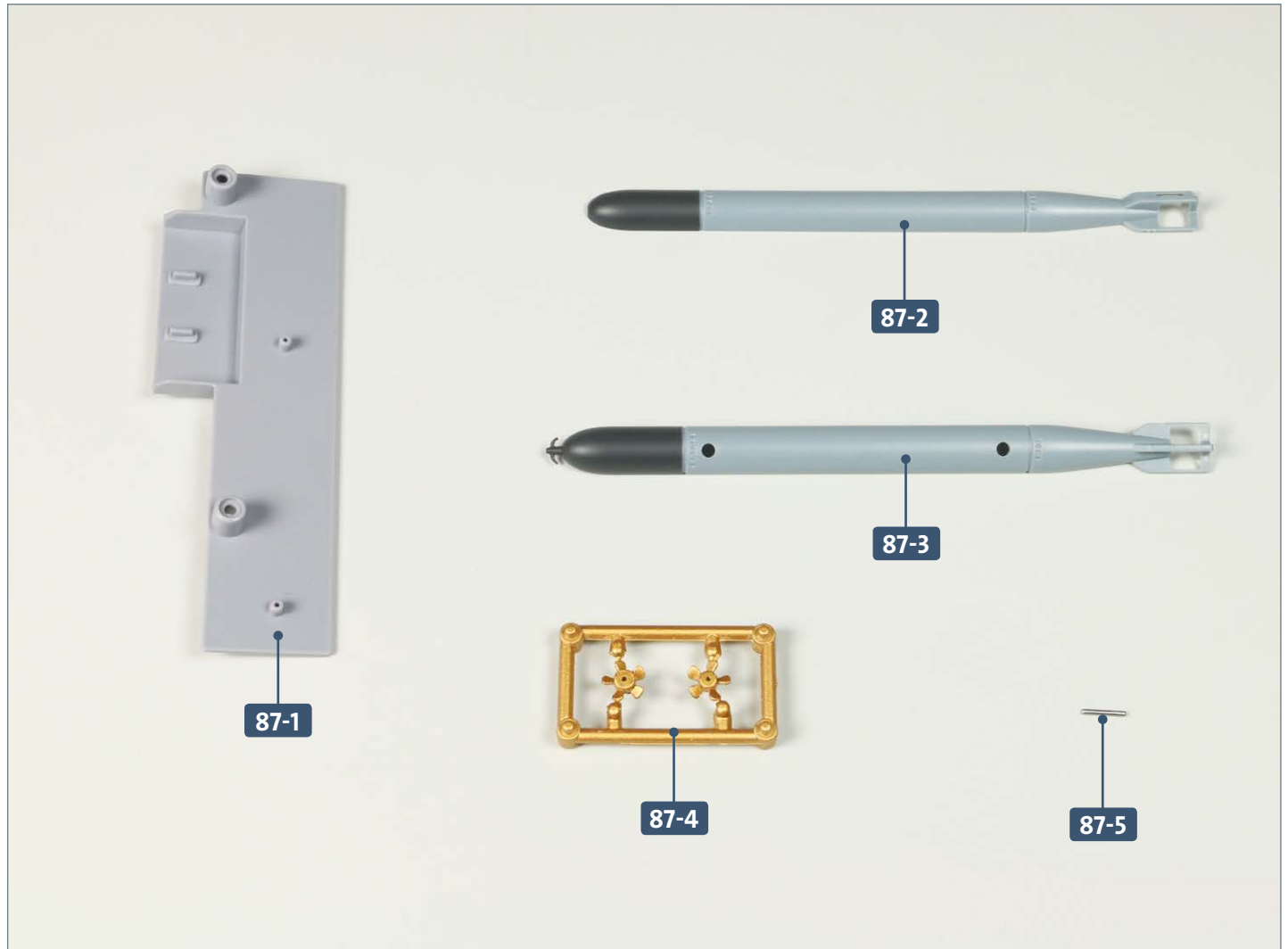
COMPLETED WORK



The port (L) electric motor is now assembled. The deck plate **86-1** will be used in kit 91.

Kit 87: Another torpedo

In this kit, you will assemble a torpedo and fit it with a propeller. The torpedo and port (L) electric motor are attached to the deck base plate of the engine room.

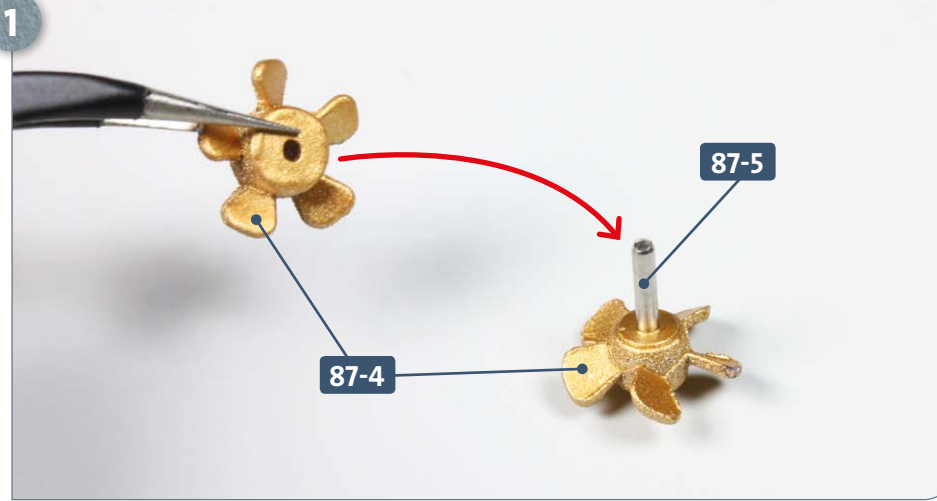


Parts reference list

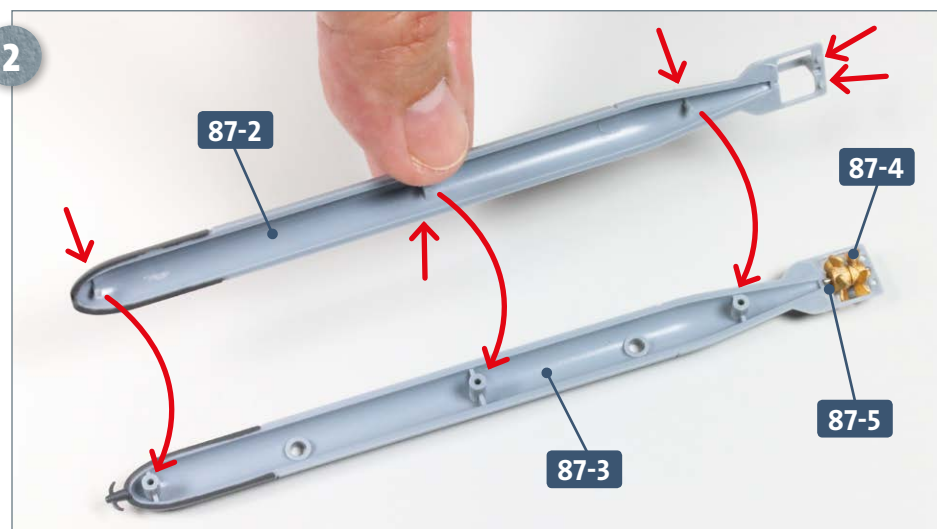
Part no.	Name
87-1	Base plate
87-2	Torpedo half
87-3	Torpedo half
87-4	Propeller
87-5	Shaft

Kit 87: Another torpedo

STAGE 1 → Assembly and mounting of a torpedo



Separate the two counter-rotating screws from frame **87-4**. Connect the two screws around the shaft **87-5** to form a propeller, as shown.

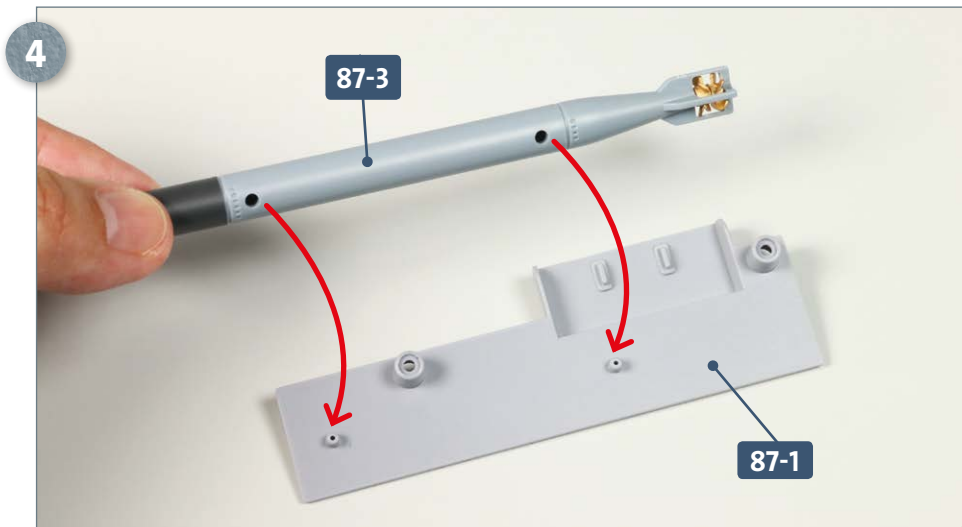


Take torpedo half **87-3** and insert the propeller **87-4** so that the shaft **87-5** sits in the recess in the torpedo. Take the second torpedo half **87-2**, apply some glue to the three small pegs along the length of the torpedo, as well as the two pegs near where the propeller sits, and insert these into the sockets in torpedo half **87-3**, indicated by the long, red arrows.

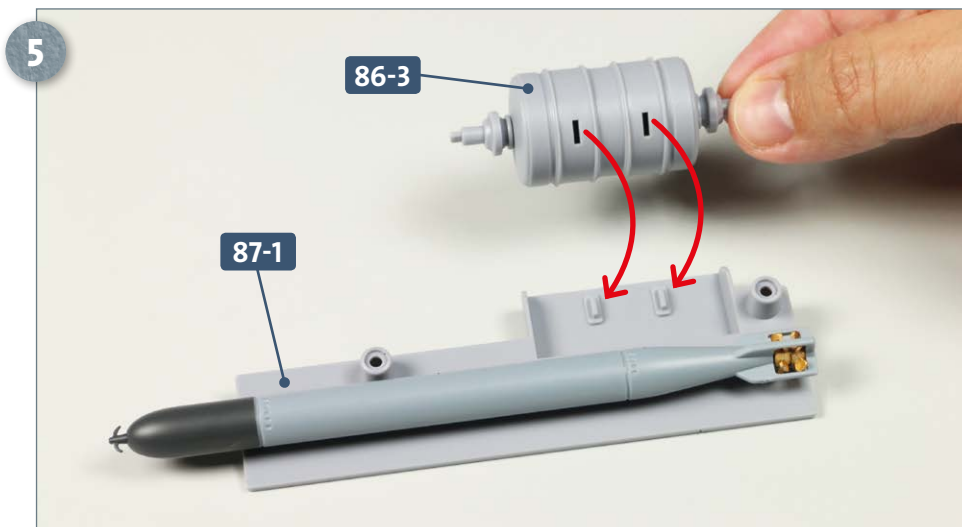


Join the two halves of the torpedo **87-2** and **87-3**, and gently press together.

Kit 87: Another torpedo



Take the base plate **87-1** and apply some glue to the two small pegs. Take the torpedo **87-3** and fit its holes over the two pegs on the base plate, as indicated by the arrows, left.



After fitting the torpedo **87-3**, note the orientation of the port (L) electric motor **86-3**. Apply a little glue to the two tabs on the base plate **87-1** and attach the electric motor **86-3** as indicated by the arrows.

COMPLETED WORK



The torpedo and port (L) electric motor are now attached to the base plate.

Kit 88: Hull section

In this kit, the assembly of the hull continues: a starboard (R) section is fitted with a metal plate and is then attached to the third compartment.



Parts reference list	
Part no.	Name
88-1	Starboard (R) hull section
88-2	Metal plate

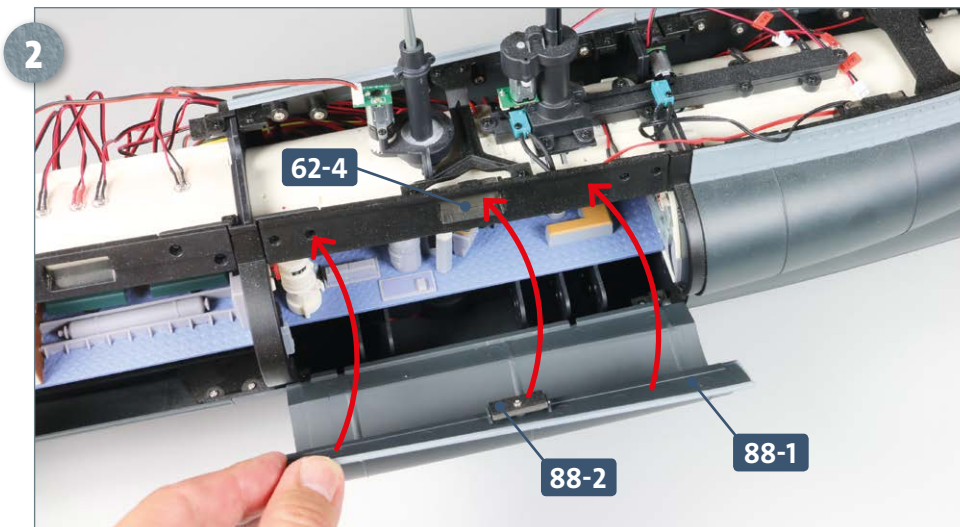


Screws		
Ref	No.	Dimension
EM	1 + 1	2 x 4 mm

STAGE 1 → Attaching the hull section

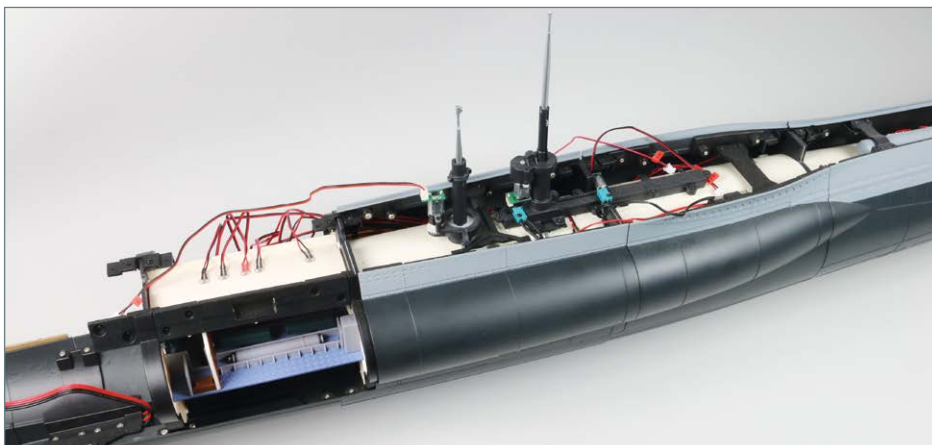


Place the hull section **88-1**, with the inside facing upwards, on your work surface along with an **EM** screw. Place the metal plate **88-2**, with the countersink upwards, on the hull section as indicated by the arrow. Fix the plate in place using the **EM** screw (see inset, below).



Place the main U-Boat assembly on your worktop so that you have access to the starboard (R) side. Fit the lip at the bottom of hull section **88-1** onto the edge of the hull plate below the third compartment. Tilt part **88-1** upwards so that the metal plate **88-2** sits against the magnet **62-4**, as indicated by the middle arrow.

COMPLETED WORK



A third removable hull section has now been attached to the starboard (R) side of the U-Boat.